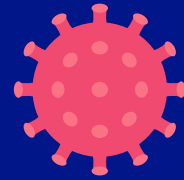
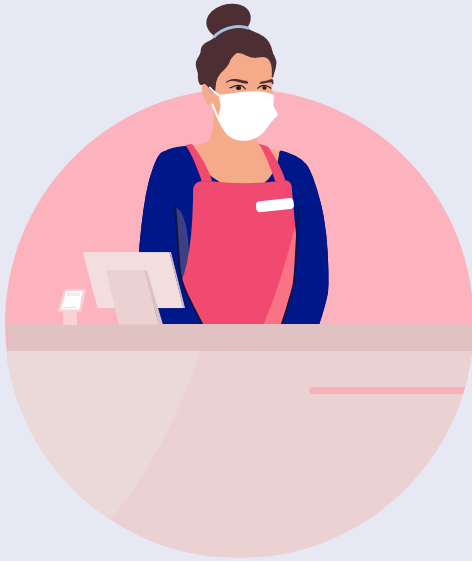


COVID-19 (Coronavirus)



When to wear a mask

Workers at all workplace premises **should wear masks**



Frontline staff
(e.g food handlers, cashiers)



Those performing backend functions
(e.g. data entry, payroll etc.)

If you leave the house to purchase essentials or for work: **Wear a mask**



While taking public transport or in taxis



At the grocery store

*You do not need to wear a mask
when at home, when exercising or if a child under the age of 2*

