



COVID-19 Traveller Health Instructions

Please review the quarantine instructions below that you must follow while you are in Bermuda as Per the **Quarantine Act 2017 s.11** and the **Quarantine (COVID-19)(No.4) Order 2020**, failure to comply may result in a fine of **\$25,000 and/or imprisonment for up to 6 months.**

Your Instructions Today: <INSERT DATE> at _____

You had a Pre-departure COVID-19 Test
*(Adults and children 10 and older)**

Quarantine in your room at your accommodation until you get a negative arrival result.

Wear a Traveller Wristband
**Children 9 and younger must quarantine with a parent or guardian*

During your Stay

If a negative test result received from arrival test, you MUST follow the Traveller's First 14 Days (on second page)



Monitor your health daily

Take your temperature twice daily for 14 days	Log your temperature overleaf	Record any symptoms
---	-------------------------------	---------------------



If your temperature is over 100.4F or 38C please email: covid19surv@gov.bm



Test on day 4 on: _____ at _____

A reminder email will be sent 24 hours before your test



Test on day 8 on: _____ at _____

A reminder email will be sent 24 hours before your test



Test on day 14 on: _____ at _____

A reminder email will be sent 24 hours before your test

Frequently Asked Questions

- All of your PCR COVID-19 testing appointments for day 8 and 14 are booked upon arrival. If one of the testing days is also your departure day, you do not need to test that day.
- While the above protocols hopefully capture most of the information required, we know there are specific circumstances that may arise.
- We hope we have answered your questions in our Traveller Frequently Asked Questions at www.gov.bm/coronavirus-travellers
- For more health information or assistance with rescheduling your appointments, please call the COVID-19 hotline at 444-2498 between 9 am – 9 pm

Positive COVID-19 Result

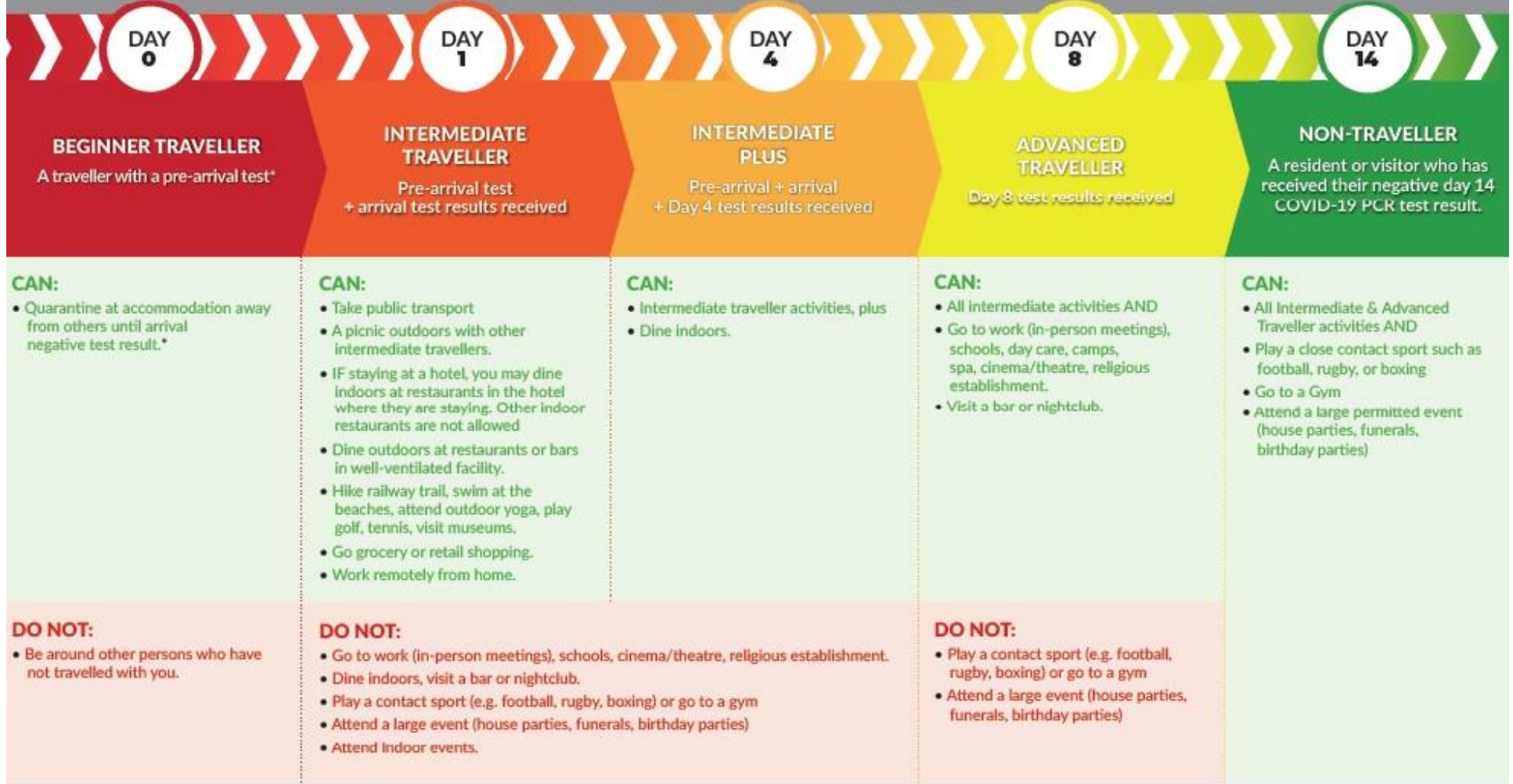
If a traveller becomes COVID-19 positive, is a close contact of a positive person, is symptomatic, or if a traveller is clinically diagnosed at any point, they will be isolated at their accommodation for up to 14 days.



COVID-19 Traveller Health Instructions

Travellers' First 14 days in Bermuda – Guidance for Residents and Visitors

Mandated as per the Quarantine (COVID-19) (No.3) Order 2020



*A resident WITHOUT a pre-arrival COVID-19 PCR test result MUST Quarantine at accommodation away from others until day 8 negative test result with negative Day-8 results they can start Advanced activities.

Activities noted for Intermediate and Advanced travellers in both the "CAN" and "DO NOT" columns are examples, and do not include all possible activities.

All persons should avoid the 3 C's at all times: Closed Spaces, Crowded Places and Close-contact settings