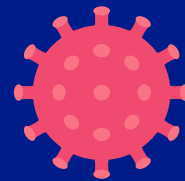


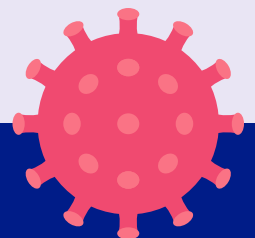
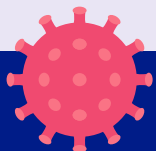
COVID-19 (Coronavirus)

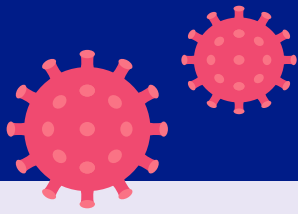


Status of Operations as of 4 May 2020

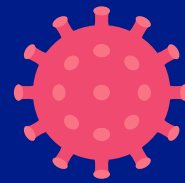
Ministry	Full Operations under Physical Distancing and Limited Public Access	Reduced Operations	Non-operational
Labour, Community Affairs and Sports		All Departments fully devoted to administration of the Unemployment Benefit including Head Quarters, Workforce Development, Community and Cultural Affairs and Youth and Sports	
Cabinet	Head Quarters Statistics ICT Policy and Innovation Fintech Business Development Unit Department of Communications Information and Digital Technology Office of Procurement and Project Management.	Post Office Open Tue - Thu 8:00 am - 3:00 pm Human Resources/Department Employees and Organization Development	
Health	Department of Health (only critical services) Health Insurance Department Financial Assistance Aging and Disability Services	Sections of Ministry Headquarters, the Office of the Chief Medical Officer and the Department of Health are fully devoted to Covid-10.	
Legal Affairs	Drafting Section Court Services: Sex offenders and High Risk clients only DCFS: Residential Treatment Services DNDC: Nelson Bascome Substance Abuse Facility	Courts Cashiers Mon, Wed, and Fri (9:30am to - 12:30pm) Legal Aid Mirrors Financial Sanctions Advisory/Debt Enforcement Judicial Court Services Department of Public Prosecutions. Department of Child and Family Services Department of National Drug Control: Administration Section	

Stay informed on the latest developments about COVID-19 by visiting the Government of Bermuda's website coronavirus.gov.bm





COVID-19 (Coronavirus)



Ministry	Full Operations under Social Distancing and Limited Public Access	Reduced Operations	Non-operational
Tourism and Transport	Marine and Ports: Piloting, Tug Services, Maritime Ops Centre Head Quarters Shipping and Maritime Authority Civil Aviation Authority Airport Authority	Marine and Ports - Ferries to commence limited service from 11 May Department of Public Transportation, Buses to commence limited service in May, date to be confirmed. Bermuda Tourism Authority Transport Control Department Hotel Regulation	
Finance	Accountant General Registrar of Companies Head Quarters Tax Commissioner Social Insurance		
Education		Ministry Head Quarters Department Head Quarters	Libraries and Archives Schools
Home Affairs	Planning In person services by appointment only. Registry General In person services by appointment only. Consumer Affairs In person services by appointment only. Department of Environment and Natural Resources Department of Energy		Aquarium
National Security	Bermuda Police Services Department of Corrections Bermuda Fire & Rescue Services Department of Customs Royal Bermuda Regiment Disaster Risk Reduction & Mitigation Gang Violence Reduction Unit	Department of Immigration National Security Headquarters	
Public Works	All Departments and Sections fully Operational		

