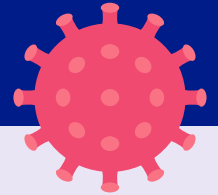


# COVID-19 (Coronavirus)



## Quick Guide to Safe Return to Work after Travel Recommendations

### High Risk Work Setting

(Eg: Care Homes, Corrections, Health Professionals)

Only return to work after negative day 14 COVID-19 PCR test result.\*

### Medium Risk Work Setting

(Eg: Schools, Gyms, Day Cares)

Only return to work after negative day 8 test result.

### Low Risk Work Setting

(Eg: remote workers and workers in an office space without shared areas)

Return to work immediately

**Note:** All travellers must comply with all quarantine and testing requirements as per the Quarantine (COVID-19) (No.3) Order 2020.

**\*EXCEPTIONS:**

**1. Essential Worker:\***

Only return to work after negative arrival, day 4 and day 8 COVID-19 PCR test results and follow workplace isolation\*\*

**2. Visiting Specialists:**

Only go to work after negative pre-departure and arrival COVID-19 PCR test results OR arrival and day 4 negative test results and follow workplace isolation\*\*

\*Essential Worker is providing care that is critical to the health and well-being of the community and Bermuda where no other local providers are available.

\*\*Workplace isolation means staff should wear surgical/procedure masks and any additional PPE, based on usual routine practices and wear the PPE at all times in the workplace (acute care and non-acute care), not just during client care. The workers should work in only one facility. The health care worker must not eat meals in shared spaces in the facility as they will have to remove the PPE to eat.

For more details see [the Safe Return to Work after Travel Guidance](#).

