

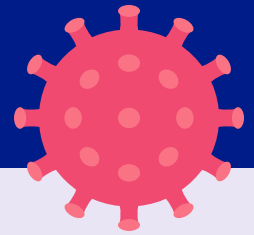
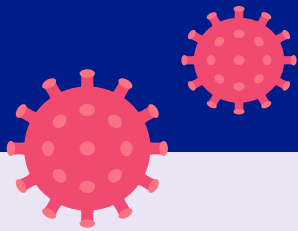
Bermuda COVID-19

TIME-LINE

Date	FEBRUARY
7	Covid-19 legally classified as a threat
	MARCH
11	*The WHO made the assessment that COVID-19 can be characterized as a pandemic
12	Travel ban for travellers through four high-risk countries
18	First two confirmed cases
19	<ul style="list-style-type: none"> Bus and Ferry services suspended Government operated quarantine facility opened
20	<ul style="list-style-type: none"> Travel ban for non-residents wishing to enter Bermuda Enforced self-quarantine of all incoming travellers On Island testing commenced Normal cargo operations maintained Closed schools, pools, gyms, salons, churches, sporting events, concerts
21	Imported cases*
23	<ul style="list-style-type: none"> Enforced self-quarantine of travellers since 17 March Closed bars and clubs, beauty salons, spas and barbers, cinemas, organized sports with more than ten people, restaurant dine-in services, retail stores, day cares, swimming pools in hotels, Airbnb and guest houses
25	Local transmission*
	APRIL
1	Employers obliged to let employees to work remotely
2	Incoming travellers to quarantine at Government facility for 14 days
4	Shelter in Place started. Exemptions for essential and critical personnel
6	First two COVID-19 reported deaths
9	Clusters of cases*
16	Care home workers restricted from working at multiple sites
18	Shelter in Place extended
21	Travellers with a positive COVID test to quarantine at Government facility for an additional 14 days

* World Health Organization (WHO) SIT Report Publication

COVID-19 (Coronavirus)



MAY

2

- Shelter in Place ended
- Phase 1 started – Limited Business

9

Free COVID-19 PCR and antibody testing available

11

Limited ferry service began

21

Phase 2 started – Expansion of Services

JUNE

5

Requirement to quarantine at Government facility removed

11

- Phase 3 started – Moving to Normal
- Travel ban on non-residents entering Bermuda removed

18

Phase 3B started – Moving to Normal

23

Sporadic cases*

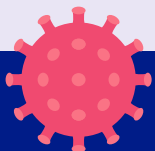
JULY

1

Phase 4 started

** World Health Organization (WHO) SIT Report Publication*

**Stay informed on the latest developments about COVID-19 by visiting the
Government of Bermuda's website coronavirus.gov.bm**



GOVERNMENT OF BERMUDA
Ministry of Health

