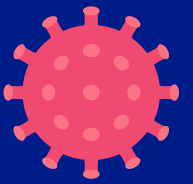


COVID-19 (Coronavirus)



Phase 4

Information for Bermuda-bound Travellers

We welcome visitors and returning residents to Bermuda.

Our island home has always been a precious resource set apart by its geographic location and way of life. Over the past few months, we've been dedicated to protecting our community and pristine destination for our residents and guests to enjoy for years to come. When you are ready, we look forward to extending a warm welcome.

PRE-DEPARTURE:

Prior to departing for Bermuda, travellers (residents and visitors) must:

- Complete the Bermuda Travel Authorisation process online which gathers important information for the island's health and immigration officials; a \$75 fee is required which includes the cost of COVID-19 testing in Bermuda. Children 9-years-old and younger do not have to be tested so will be charged \$30 for their Travel Authorisation.
- A **visitor** must take a certified PCR COVID-19 test ideally within 72 hours of departure, but no more than seven days, and obtain a negative result. This applies to adults and children 10 years-old and up. Children 9-years-old and younger are exempt.
- **Residents** are not required to get a test before travelling to Bermuda.
- Wear face masks when travelling to the departure airport.
- Wear face masks and practise physical distancing at the departure airport.



A traveller (residents and visitors) should:

- A visitor should acquire health insurance covering illness outside of home jurisdiction to cover all health costs including those related to a positive COVID-19 diagnosis while in Bermuda. If this is not obtained, a visitor will be responsible for all health and accommodation costs if treatment and/or quarantine is required; including costs related to a positive COVID-19 diagnosis while in Bermuda.
- Pack a thermometer

IN FLIGHT:

During flight, travellers (residents and visitors) must:

- Wear a face mask while on the plane
- Practise physical distancing to the greatest extent possible



UPON ARRIVAL:

Upon arrival, travellers (residents and visitors) must:

- Show a copy of your Travel Authorisation.
- A **visitor** must present a copy of a negative pre-departure COVID-19 test result.
- Undergo PCR COVID-19 testing at airport and quarantine at accommodation until results are ready (turnaround time within 8 to 12 hours). This applies to adults and children 10 years-old and up. Children 9-years-old and younger are exempt.
- **Residents** who do not have a pre-departure negative PCR COVID-19 test result must quarantine for three days after arrival in your home or room of your accommodation and must wear a quarantine electronic bracelet. They will be tested on day three and will be released from quarantine with a negative test result. If you did take a PCR COVID-19 test before departure, and receive a negative result during your first three days in Bermuda, you will be released from quarantine. You will still have to test on day 8 and day 14.
- **Residents** who refuse all testing will quarantine with a quarantine bracelet for 14 days. If a test is rejected on day 14, they must quarantine an additional 14 days.
- Wear a face mask and practise physical distancing to the greatest extent possible.



ON-ISLAND EXPERIENCE:

When enjoying Bermuda, travellers (residents and visitors) must:

- Practise physical distancing, good hygiene and mask-wearing in all public spaces where there is close contact with others including all transport (taxis, ferries and buses). Simultaneously, we're working to increase contactless payment methods.
- Take and record your own temperature twice per day. If your temperature is over 100.4F or 38C, please contact the public health team on +1(441)444-2498 or covid19surv@gov.bm
- Take a COVID-19 PCR test on day 3 or 4, on day 8 and again on day 14. Find information about testing locations here: <https://www.gov.bm/coronavirus-get-tested>. Your results will be emailed to you.



COVID-19 POSITIVE TEST RESULT

If a traveller (resident or visitor) becomes COVID-19 positive, a close contact of a positive person, symptomatic or if a traveller is clinically diagnosed at any point, they will be subject to the Public Health (COVID-19) Regulations and will be quarantined or isolated, as appropriate at their accommodation.

Persons who convert to positive or are suspect cases will be fitted with electronic bracelet to ensure isolation/quarantine.

