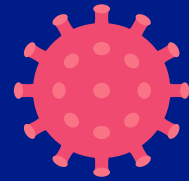
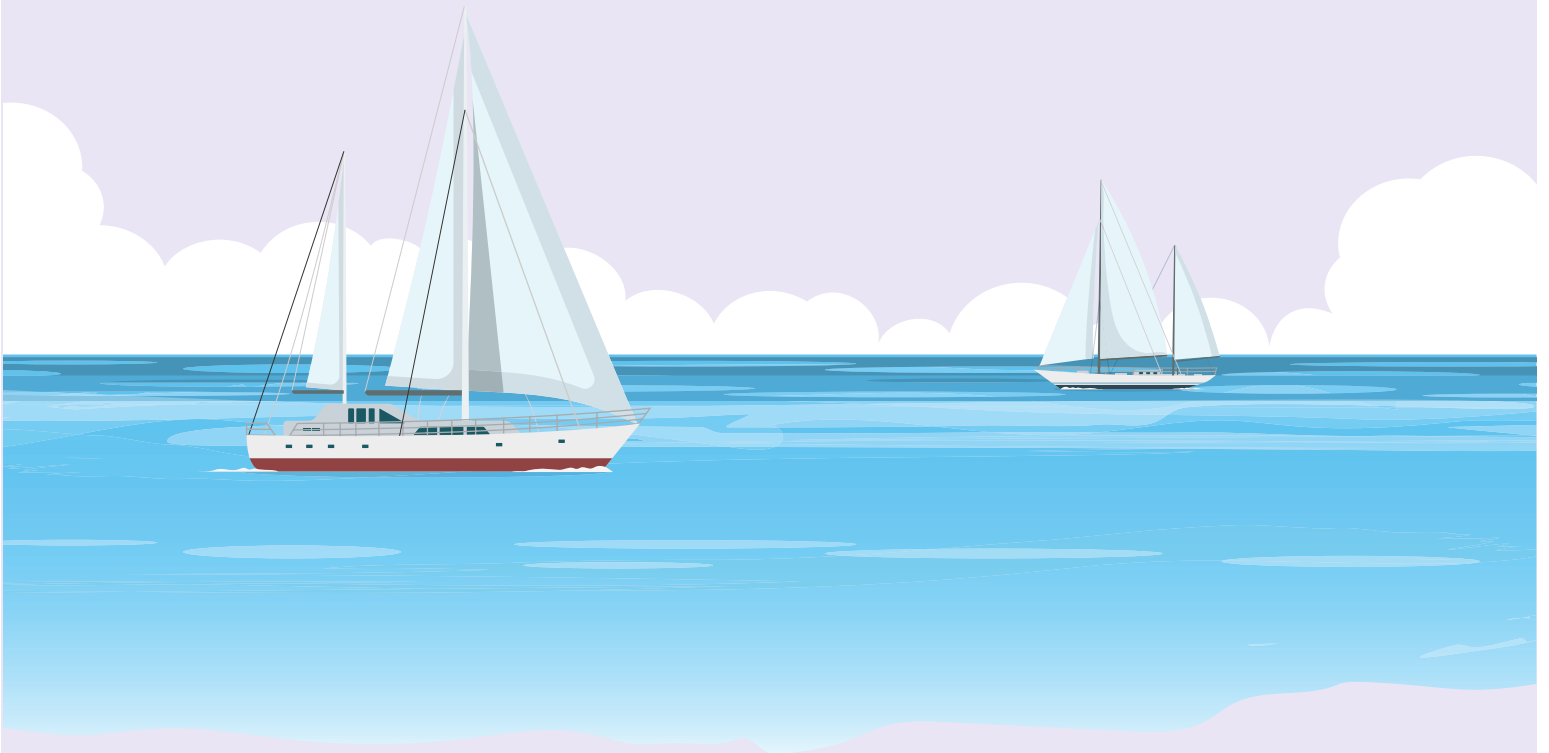


# COVID-19 (Coronavirus)

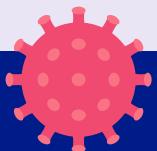


Phase  
4

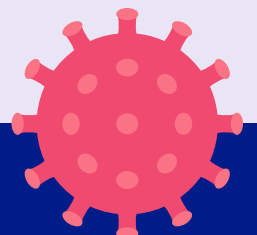
## Inbound Mariners Guidance



Stay informed on the latest developments about COVID-19 by visiting the  
Government of Bermuda's website [coronavirus.gov.bm](https://coronavirus.gov.bm)



GOVERNMENT OF BERMUDA  
Ministry of Health



# Inbound Mariners Guidance

## CORONAVIRUS (COVID-19) INFORMATION FOR MARINERS

As of 3<sup>rd</sup> August 2020

We look forward to welcoming mariners to our shores.

Our island home has always been a precious resource set apart by its geographic location and way of life. Over the past few months, we've been dedicated to protecting our community and pristine destination for our residents and guests to enjoy for years to come. When you are ready, we look forward to extending a warm welcome.

Due to the COVID-19 pandemic, the Bermuda Government has put in place mariner protocols, which include the requirement to apply for a Travel Authorisation.

### QUARANTINE:

Anyone entering Bermuda shall comply with the requirements under the [Quarantine Act 2017](#), [the Quarantine \(COVID-19\) \(No. 3\) Order](#) and the [Public Health Act 1949](#).

Persons shall quarantine on their yacht until released by a Port Health Officer. All yachts shall fly the yellow signal "Q (Quebec)" flag indicating that they are in quarantine.

### MARINERS - WHAT YOU NEED TO KNOW:

Ensure you pack:

- a) **A Smart phone**
- b) **A Thermometer**
- c) **Face masks**
- d) **Two hard copies of your Traveller Authorisation document; and**
- e) **Two hard copies of your pre-departure PCR COVID-19 test results.**

### PRE-DEPARTURE - A MARINER MUST:

- Apply for the Bermuda Travel Authorisation process online which gathers important information for the island's health, immigration and port officials; a \$75 fee is required, which includes the cost of the PCR COVID-19 testing in Bermuda. For Technical Support, visit our [Travel Authorisation Application Technical Support FAQ's](#) or contact the COVID-19 Hotline on +1(441)444-2498 or email [coronavirus@gov.bm](mailto:coronavirus@gov.bm).

- **NOTE:** Children 9 and younger do not have to be tested at any point, so will be charged a reduced fee of \$30 for their Travel Authorisation. Children 10-17 must receive parental consent to be tested. If consent is denied, the young traveller must quarantine for 14 days on arrival.
- To apply visit: [Coronavirus \(COVID-19\) Information for Travellers \(https://www.gov.bm/coronavirus-travellers\)](https://www.gov.bm/coronavirus-travellers).
- Select whether you are a Resident or a Visitor and apply for the Bermuda Travel Authorisation.
- Visiting mariners must take a certified PCR COVID-19 test, ideally within 72 hours before departure, but no more than seven days, and obtain a negative result. This applies to adults and children aged 10 and up. Children who are 9-years-old and younger are exempt and are subject to their parent or guardian's quarantine.

#### ADDITIONALLY - A MARINER SHOULD:

- Acquire health insurance covering illness and injury outside of his/her home jurisdiction, including those related to a positive COVID-19 diagnosis while in Bermuda. If this is not obtained, a mariner will be responsible for all health and accommodation costs if treatment and/or quarantine is required; including costs related to a positive COVID-19 diagnosis while in Bermuda.

#### UPON APPROACH TO BERMUDA:

- On approach, mariners should contact Bermuda Radio on VHF Channel 16 when 30 miles from the island.

#### UPON ARRIVAL IN BERMUDA - MARINERS MUST:

1. Visiting Mariners must present a hard copy of their pre-departure PCR COVID-19 negative test result and their Travel Authorisation to Health Officers when yachts clear Customs and are assessed by Port Health representatives at the Yacht Reporting Centre.
2. Yachts arriving in Bermuda without any prior notification, will be considered intransit and will not be landed.
3. Mariners must undergo PCR COVID-19 testing upon arrival and quarantine onboard the vessel until results are ready (turnaround time is approximately 24 hours for most results). This applies to adults and children ages 10 and up. Children 9-years-old and younger are exempt from the PCR COVID-19 test.
4. Wear a face mask and practise physical distancing to the greatest extent possible.

5. Where a yacht has no e-mail or internet capability, they should maintain a listening watch on VHF Channel 16 so that Bermuda Radio can make contact with them in relation to COVID-19 testing arrangements or when crew test results are ready. Please note that the onus is on the vessel Captain to arrange testing in accordance with local requirements and in turn to seek confirmation of test results from the mariners on their boat. Test results will be emailed to each mariner.
6. The onus is also on the vessel's captain to be aware of any existing land and/or marine curfew requirements that are in effect.

#### RESIDENT MARINERS – SPECIAL INFORMATION:

1. Residents are not required to have a pre-departure COVID-19 test, but are encouraged.
2. Resident Mariners who do not have a pre-departure negative PCR COVID-19 test result must test upon arrival, and quarantine away from the other crew members. They will be tested on day 4 after arrival and will be required to quarantine until they receive a negative test result.
3. If a resident did take a PCR COVID-19 test before departure, and receives the results during the first four days in Bermuda (and they are negative), they will be released from quarantine.
4. If all mariners onboard are Bermuda residents, you can deny all tests, however, then all mariners must quarantine onboard for 14 days. On day 14, a test will be offered. If the test results are negative, quarantine will end. If the day 14 test is denied, then mariners will be required to quarantine an additional 14 days – a total of 28 days.

#### ON-ISLAND EXPERIENCE:

1. Practise physical distancing, good hygiene and mask wearing in all public spaces where there is close contact with others, including on all public transport (taxis, ferries and buses).
2. Monitor your health, take your own temperature twice per day and record any symptoms and temperature on the Symptom and Temperature Log (see Annex).
3. Take a COVID-19 PCR test on day four (4), day eight (8) and day 14. **The location and time of each of your tests will automatically be booked for you, so please do not book separate appointments.** You will receive email reminders 24 hours before each test.
4. Mariners may depart Bermuda anytime based on their travel itinerary if shorter than 14-days.

## COVID-19 POSITIVE TEST RESULT:

1. If a mariner becomes COVID-19 positive, or is a close contact of a positive person, is symptomatic, or if a mariner is clinically diagnosed at any point, they will be subject to public-health (COVID-19) regulations and will be isolated onboard for up to 14 days. See additional note following.
2. Anyone who becomes COVID-19 positive, or whom health authorities believe could be positive, will be required to isolate onboard unless hospitalisation is needed.
3. The only other option is to leave Bermuda by private plane or yacht. Commercial airlines will not transport positive result persons to your home city unless you test negative, following 14 days quarantine in Bermuda.

## GENERAL NOTE:

1. If one mariner tests positive, then all mariners onboard the yacht may be required quarantine for 14-days. You will be contacted by a Public Health Officer if you are considered a close contact as part of the contact tracing process.

## CAPTAINS - WHAT YOU NEED TO KNOW BEFORE DEPARTING FOR BERMUDA:

1. Upon receipt of the (i) Travel Authorisation and (ii) a negative PCR COVID-19 test result, please scan both documents for each mariner and send before departure to: [dutyofficer@marops.bm](mailto:dutyofficer@marops.bm) and [porthealth@gov.bm](mailto:porthealth@gov.bm)
2. Complete the on-line Bermuda Pre-arrival Safety Form at <http://www.marops.bm/sailbda.aspx>
3. Complete the Maritime Declaration of Health available at <http://www.marops.bm/sailbda.aspx>
4. Yachts clear Customs and are assessed by Port Health representatives at the Yacht Reporting Centre in St. George.
5. Normal procedures for application of transit, cruising or charter permits apply (Passenger Ships and Other Vessels Act 1972). Exempted vessels include those participating either as a 'competitor' or 'support vessel' in a sailing race or event approved by the Minister responsible for Transport, and no Government permit fees apply.
6. Mariners are reminded to wear a face mask and stay at a distance from any other person of at least— two metres (six feet) during the customs clearance process.
7. Yachts, after clearing Customs, shall proceed to the quarantine anchorage in Powder Hole on the south side of St. George's Harbour to await your arrival test results, or quarantine as directed by the public health officer.

8. A yacht needing to shift from this anchorage while under quarantine (due to weather or other problem) shall notify Bermuda Radio on VHF Channel 16.
9. During the quarantine period, all yachts must fly the yellow signal “Q (Quebec)” flag.
10. During the quarantine period, all commerce will be contactless and fueling/provisioning shall occur by prior arrangement with suppliers. Items will be delivered to a suitable dock where they can be collected by tender. Mariners accepting deliveries must wear a face covering (mask) and stay at a distance from any other person of at least— two metres (six feet).
11. Mariners will be able to berth vessels alongside or at anchor around Bermuda with permission of Bermuda Radio, and the respective marina or yacht club if applicable.
12. If Bermuda goes back to mandatory Shelter in Place orders, mariners will be required to shelter aboard the vessel or may depart Bermuda.
13. Vessels may depart Bermuda anytime based on their travel itinerary if shorter than 14-days.

# Symptom and Temperature Log

Complete this log daily for 14 days after you arrive in Bermuda

DAY	DATE	SYMPTOMS	TEMP
DAY 0		Day 0 is the day you arrived in Bermuda.	
DAY 1		☀️ ☾	
DAY 2		☀️ ☾	
DAY 3		☀️ ☾	
DAY 4		☀️ ☾	
DAY 5		☀️ ☾	
DAY 6		☀️ ☾	
DAY 7		☀️ ☾	
DAY 8		☀️ ☾	
DAY 9		☀️ ☾	
DAY 10		☀️ ☾	
DAY 11		☀️ ☾	
DAY 12		☀️ ☾	
DAY 13		☀️ ☾	
DAY 14		☀️ ☾	

**If you get sick**, inform your healthcare provider.

Tell them your symptoms and that you are under self-quarantine. You should also inform the person responsible for your public health monitoring when you are contacted.

**If you have a medical emergency, call 911. Tell them your symptoms and that you are under self-quarantine.**