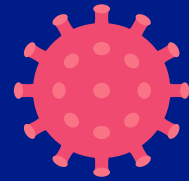
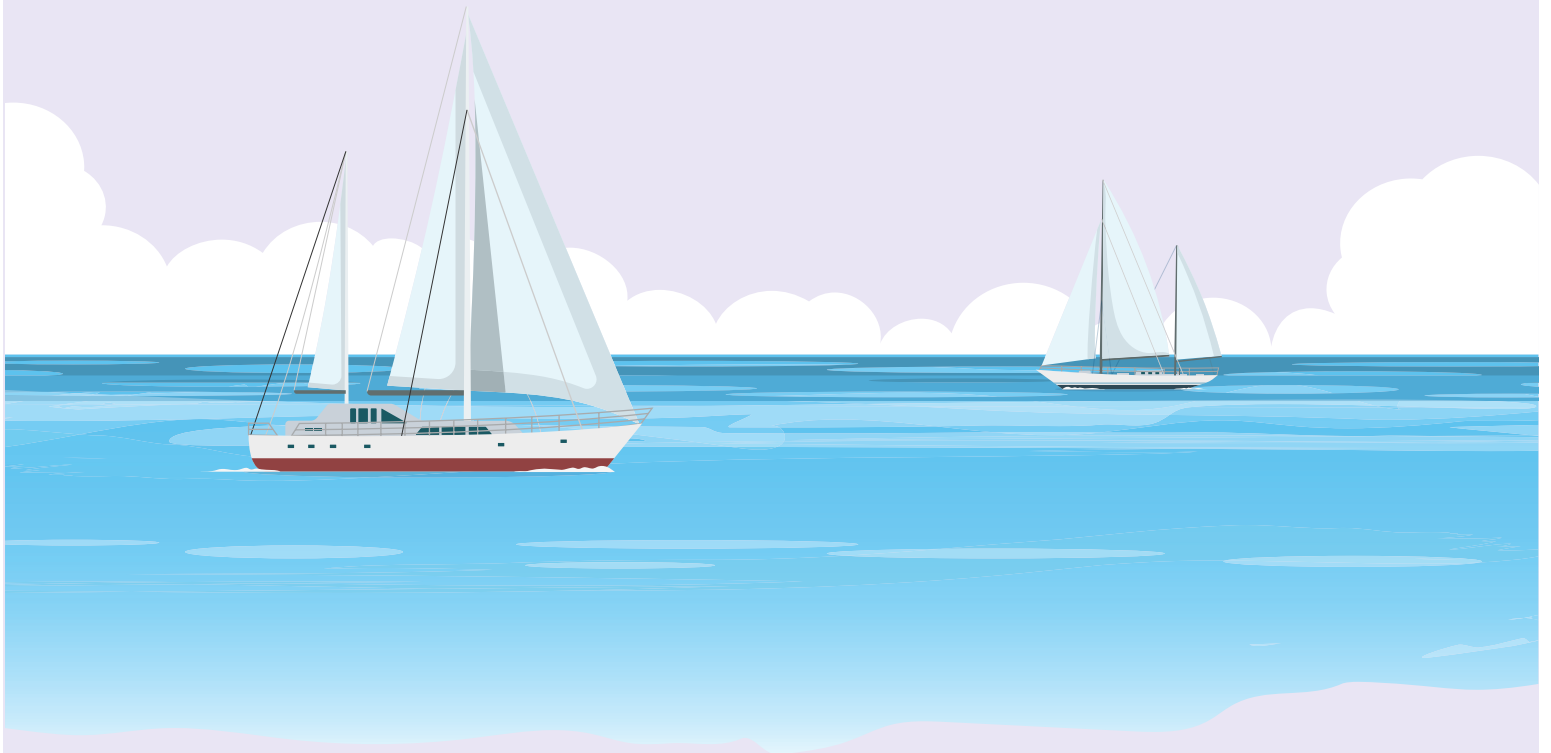


COVID-19 (Coronavirus)

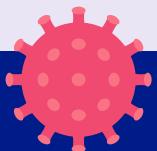


Phase
4

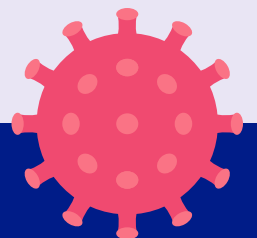
Inbound Mariners Guidance



Stay informed on the latest developments about COVID-19 by visiting the
Government of Bermuda's website coronavirus.gov.bm



GOVERNMENT OF BERMUDA
Ministry of Health



Inbound Mariners Guidance

CORONAVIRUS (COVID-19) INFORMATION FOR MARINERS

We look forward to welcoming mariners to our shores.

Our island home has always been a precious resource set apart by its geographic location and way of life. Over the past few months, we've been dedicated to protecting our community and pristine destination for our residents and guests to enjoy for years to come. When you are ready, we look forward to extending a warm welcome.

Due to the COVID-19 pandemic, the Bermuda Government has put in place mariner protocols, which include the requirement to apply for a Travel Authorisation.

QUARANTINE:

Anyone entering Bermuda shall comply with the requirements under the [Quarantine Act 2017](#) and the [Public Health Act 1949](#).

Persons shall quarantine on board their yacht until released by a Port Health Officer. All yachts shall fly the yellow signal "Q (Quebec)" flag indicating that they are in quarantine.

MARINERS - WHAT YOU NEED TO KNOW:

Ensure you pack:

- a) **Smart phone**
- b) **Thermometer**
- c) **Face masks;** and
- d) **Two hard copies of your Traveller Authorisation document**

PRE-DEPARTURE – PRE-DEPARTURE A MARINER MUST:

- Apply for the Bermuda Travel Authorisation process online which gathers important information for the island's health and immigration and port officials; a \$75 fee is required, which includes the cost of the PCR COVID-19 testing in Bermuda.
- Visit: [Coronavirus \(COVID-19\) Information for Travellers](#). Select whether you are a Resident or a Visitor and apply for the Bermuda Travel Authorisation.
- Mariners must take a certified PCR COVID-19 test, ideally within 72 hours of departure, but no more than five days, and obtain a negative result. This applies to adults and children aged 10 and up. Children who are 9-years-old and younger are exempt and are subject to their adult travel companion's quarantine.

ADDITIONALLY - PRE-DEPARTURE A MARINER SHOULD:

- Acquire health insurance covering illness and injury outside of his/her home jurisdiction, including those related to a positive COVID-19 diagnosis while in Bermuda. If this is not obtained, a mariner will be responsible for all health and accommodation costs if treatment and/or quarantine is required; including costs related to a positive COVID-19 diagnosis while in Bermuda.

UPON APPROACH TO BERMUDA:

- On approach, mariners should contact Bermuda Radio on VHF Channel 16 when 30 miles from the island.

UPON ARRIVAL IN BERMUDA - MARINERS MUST:

1. Present a hard copy of their pre-departure PCR COVID-19 negative test result to Health Officers when yachts clear Customs and are assessed by Port Health representatives at the Yacht Reporting Centre.
2. Yachts arriving in Bermuda without any prior notification to local authorities of their intended call will be required to complete the application for Travel Authorisation for submission to Port Health in the port of entry <https://www.gov.bm/coronavirus-travellers>
3. Undergo PCR COVID-19 testing upon arrival and quarantine on board the vessel until results are ready (turnaround time between 6 to 8 hours in most cases, when arrival happens during the day). This applies to adults and children ages 10 and up. Children 9-years-old and younger are exempt from the PCR COVID-19 test.
4. Mariners who do not have a pre-departure negative PCR COVID-19 test result must quarantine. They will be tested on the third day after arrival and will be required to quarantine until they receive a negative test.
5. Wear a face mask and practise physical distancing to the greatest extent possible.
6. Where a yacht has no e-mail or internet capability, they should maintain a listening watch on VHF Channel 16 so that Bermuda Radio can make contact with them in relation to COVID-19 testing arrangements or when crew test results are ready. Please note that the onus is on the vessel Captain to arrange testing in accordance with local requirements and in turn to seek confirmation of test results.
7. The onus is also on the vessel's captain to be aware of any existing land and/or marine curfew requirements that are in effect.

ON-ISLAND EXPERIENCE:

1. Practise physical distancing, good hygiene and mask wearing in all public spaces where there is close contact with others, including on all public transport (taxis, ferries and buses). Simultaneously, we're working to increase contactless payment methods.
2. Take your own temperature twice per day and report via online application/portal.
3. Take a COVID-19 PCR test on day three, day seven and day 14 at easily accessible pop-up testing centres around the island. Your tests will be scheduled when your travel authorisation is completed. You can find the testing locations [here](#). Or, additionally, a local agent or marina may make special testing arrangements dockside, upon request.
4. Mariners may depart Bermuda anytime based on their travel itinerary if shorter than 14-days.

COVID-19 POSITIVE TEST RESULT

1. If a mariner becomes COVID-19 positive, or is a close contact of a positive person, is symptomatic, or if a mariner is clinically diagnosed at any point, they will be subject to public-health (COVID-19) regulations and will be isolated on board for up to 14 days. See additional note following.
2. Anyone who becomes COVID-19 positive, or whom health authorities believe could be positive, will be required to isolate on board unless hospitalization is needed.

GENERAL NOTE

1. If one mariner tests positive, then all mariners onboard the yacht must also quarantine for 14-days. See separate note.
2. Any mariner - who does not wish to test when on the island, will quarantine along with all other mariners on board for 14 days on the vessel. If at 14 days mariners wish to be tested and it is negative, they will no longer be quarantined.

CAPTAINS - WHAT YOU NEED TO KNOW BEFORE DEPARTING FOR BERMUDA:

1. Upon receipt of the (i) Travel Authorisation and (ii) a negative COVID-19 PCR test result, please scan both documents for each mariner and send before departure to: dutyofficer@marops.bm and porthealth@gov.bm
2. Complete the on-line Bermuda Pre-arrival Safety Form at <http://www.marops.bm/sailbda.aspx>
3. Complete the Maritime Declaration of Health available at <http://www.marops.bm/sailbda.aspx>
4. Yachts clear Customs and are assessed by Port Health representatives at the Yacht Reporting Centre in St. George.

5. Normal procedures for application of transit, cruising or charter permits apply (Passenger Ships and Other Vessels Act 1972). Exempted vessels include those participating either as a 'competitor' or 'support vessel' in a sailing race or event approved by the Minister responsible for Transport, and no Government permit fees apply.
6. Mariners are reminded to wear a face mask and stay at a distance from any other person of at least— two metres (six feet) during the customs clearance process.
7. Yachts, after clearing Customs, shall proceed to the quarantine anchorage in Powder Hole on the south side of St. George's Harbour or quarantine as directed by the public health officer.
8. A yacht needing to shift from this anchorage while under quarantine (due to weather or other problem) shall notify Bermuda Radio on VHF Channel 16.
9. During the quarantine period, all yachts must fly the yellow signal "Q (Quebec)" flag.
10. During the quarantine period, all commerce will be contactless and fueling/provisioning shall occur by prior arrangement with suppliers. Items will be delivered to a suitable dock where they can be collected by tender. Mariners accepting deliveries must wear a face covering (mask) and stay at a distance from any other person of at least— two metres (six feet).
11. Mariners will be able to berth vessels alongside or at anchor around Bermuda with permission of Bermuda Radio, and the respective marina or yacht club if applicable.
12. If Bermuda goes back to mandatory Shelter in Place orders, mariners will be required to shelter aboard the vessel or may depart Bermuda.
13. Vessels may depart Bermuda anytime based on their travel itinerary if shorter than 14-days.

WHAT A POSITIVE COVID-19 TEST RESULT MEANS FOR YOUR VESSEL -

1. **Mandatory isolation** for any person who tests positive in Bermuda, along with mandatory quarantine for all persons travelling in the same party for 14-days.
2. Mariners will be contacted by a **Bermuda Government Health Official** who will update you and persons in your party on all Public Health (COVID-19) Regulations in Bermuda and advised further steps.
3. Isolation and quarantine will take place on your yacht.
4. The only other option is to leave Bermuda by private plane or yacht. Commercial airlines will not transport positive result persons to your home city unless you test negative, following 14 days quarantine in Bermuda.