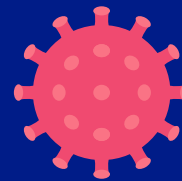


COVID-19 (Coronavirus)



Day Care Guidance for Parents

Bermuda is taking a phased approach to reopening during the COVID-19 crisis. As such the Government has confirmed Day Care Centres may be able to open during Phase II to allow for care especially for children of essential workers. That will mean some restrictions for both the children, parents and the Centre.

Day Care Providers, who can care for up to three unrelated children in a setting, must currently remain closed.

Approval Process

A Licenced Day Care Centre must apply to the Child Care Regulation Programme (CCRP) in order to be approved for re-opening. The Application Form can be found on our website [here](#).

To be open, the Centre must be able to show compliance with [Re-Opening Guidance, Section IX of the Children Act 1998](#), the [Day Care Centre Regulations 1999](#) and the [Child Care Standard 2018](#).

In addition, a site visit will be conducted by the team to review the updated policies and procedures.

What to expect

Face coverings: Will **NOT** be required for children entering day care. There is too high a probability of their improper use, resulting in increased risk of transmission. Babies and children under age two **MUST NOT** have masks or face coverings on due to the danger of suffocation at any time—day care or in the community.

Be prepared for staff to be wearing masks during the day as physical distancing will be difficult with young children.

Hand washing/sanitizer: Your child will need to wash their hands more. Children will be encouraged to hand wash rather than hand sanitizer which is very harsh on their young skin.

It can be used by staff and by older children with the correct supervision. See helpful link [here](#).

Diapering/Toileting: Gloves must be worn and hands washed immediately after diapering a child. The diapering area must also be cleaned with disinfectant.

Pick-ups and Drop Offs will be different: The Centres must develop their own procedures based on their layout, etc but a few key points are:

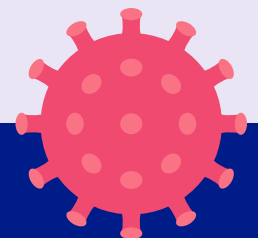
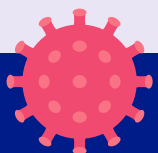
- parents and staff will need to wear masks,
- drop off will be outside the facility,
- no parents will be able to enter the facility
- the children will need to wash their hands and change their shoes before entering the classroom.

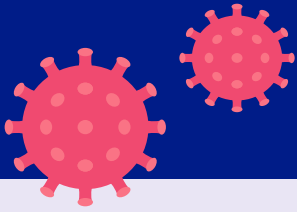
Health Checks: There will be stricter admission of children and checks on their health. Staff and children must only return to day care if they are feeling healthy and have no symptoms of COVID-19 including a fever, muscle aches and tiredness and difficulty breathing. In addition:

- Staff will not be able to administer fever reducing medicine
- Non-essential visitors to the facility (deliveries, Karate/Gymnastics/dance class instructors) should be suspended
- A room to provide care for a sick child until the parent can collect them must include gloves and masks.

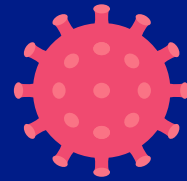
Ratios: The ratios will be reduced for the spaces to encourage physical distancing of the children, though difficult, at this age. In this phase, fewer children may be able to return to the day care or staggered days may be required to meet the demand. It will be up to the day care to decide how they meet the needs of the families and the guidance.

Stay informed on the latest developments about COVID-19 by visiting the Government of Bermuda's website coronavirus.gov.bm





COVID-19 (Coronavirus)



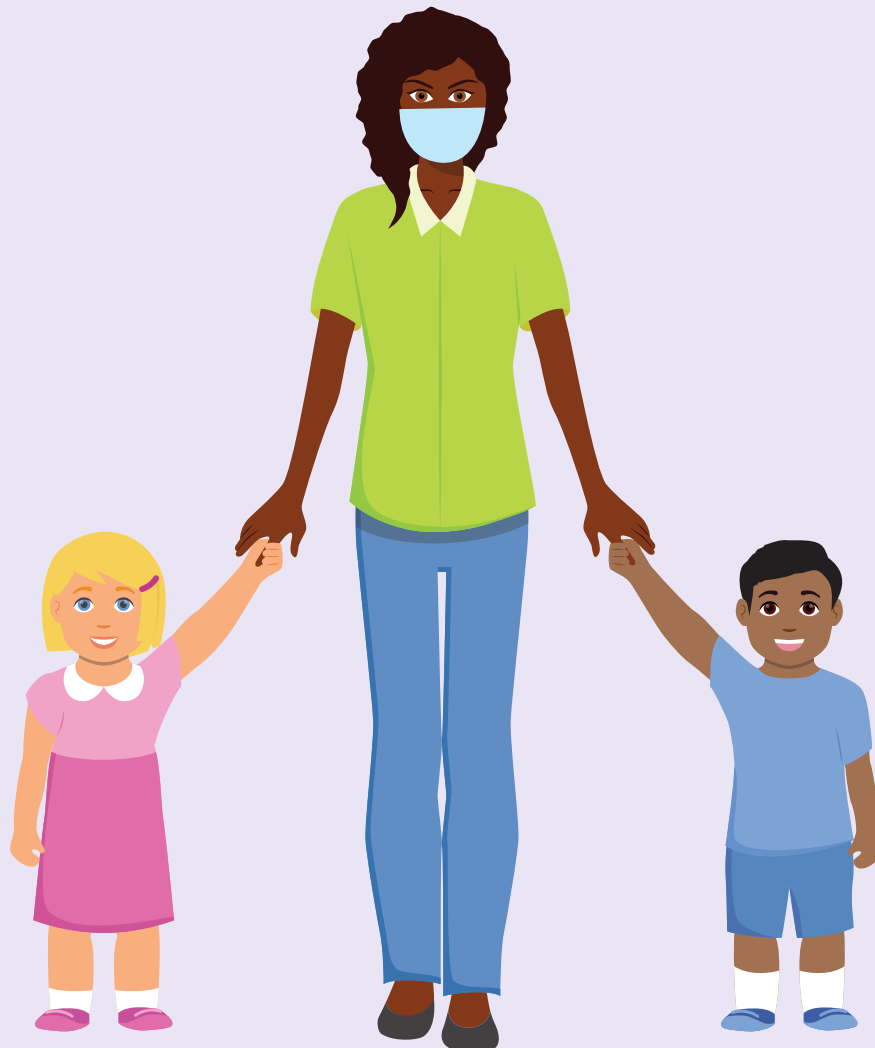
That means in this first stage it will be limited to a maximum group size of: 8 children and 2 adults.

Sick/Wellness Policy: It will need to be updated and you should ensure the day care has the most up-to-date contact details for you. The policy should be shared with you and include what would happen if the school had to temporarily close.

Activities: Staff are encouraged to use the outdoors more often and to cancel any planned activities with the Centre.

Mats and cots will need more space between the children for nap times or the use of placing children in a head to toe format may assist.

Transportation: Use of mini vans or mini buses to transport children for pick-up/drop-off services or field trips must not be provided.



Stay informed on the latest developments about COVID-19 by visiting the Government of Bermuda's website coronavirus.gov.bm

