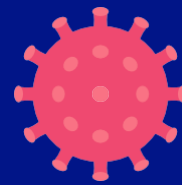


COVID-19 (Coronavirus)



COVID-19 Guidance for Polling Stations

Outside the Polling Station (s)

Physical contact must be avoided including:

- Hugging
- Handshakes
- Kissing
- Elbow bumps

Inside the Polling Station (s)

- **Candidates, voters and staff must wear masks at all times**
- Physical distancing of at least 6 feet must be maintained during any queuing and voters must wear a mask.
- Voters will be required to have their temperatures checked and must use hand sanitizers provided before entering the polling station.
- Erect signage throughout the polling station to remind voters to follow the physical distancing requirements, hand hygiene, and the need to wear masks.
- A copy of this guidance document must be prominently displayed within the polling station.
- Establish measures to manage traffic flow throughout the polling station, such as floor markings and barriers.
- Physical distancing must also be maintained in the bike/bar parking lot.

The polling station staff must take all reasonable steps to ensure that all voters

and candidates maintain appropriate physical distancing. This means maintaining a separation of at least 6 feet between persons.

Restrooms

Only one person will be allowed to use the restroom facilities at any given time.

Hand hygiene Sanitization / Cleaning

Sanitization: there will be accessible and visible sanitizing products for voters and staff, with hand sanitizers placed at each entrance.

Polling station managers will ensure that staff regularly wash their hands and use hand sanitizers provided.

All surfaces will be regularly sanitized.

Frequently Touched Areas such as booth counters, handrails, pens/pencils, door handles, keyboards and other reusable guest and staff contact items will be sanitized after use or as often as possible.

Staff and Voters Health and Wellbeing

No staff with symptoms should be allowed to work. They will be sent home and advised to contact their medical practitioner. If the temperature reading is above 37.5 degrees Celsius (99.5°F) employees will be told to seek medical advice, and will not work until medically cleared.

Stay informed on the latest developments about COVID-19 by visiting the Government of Bermuda's website [coronavirus.gov.bm](https://www.coronavirus.gov.bm)

