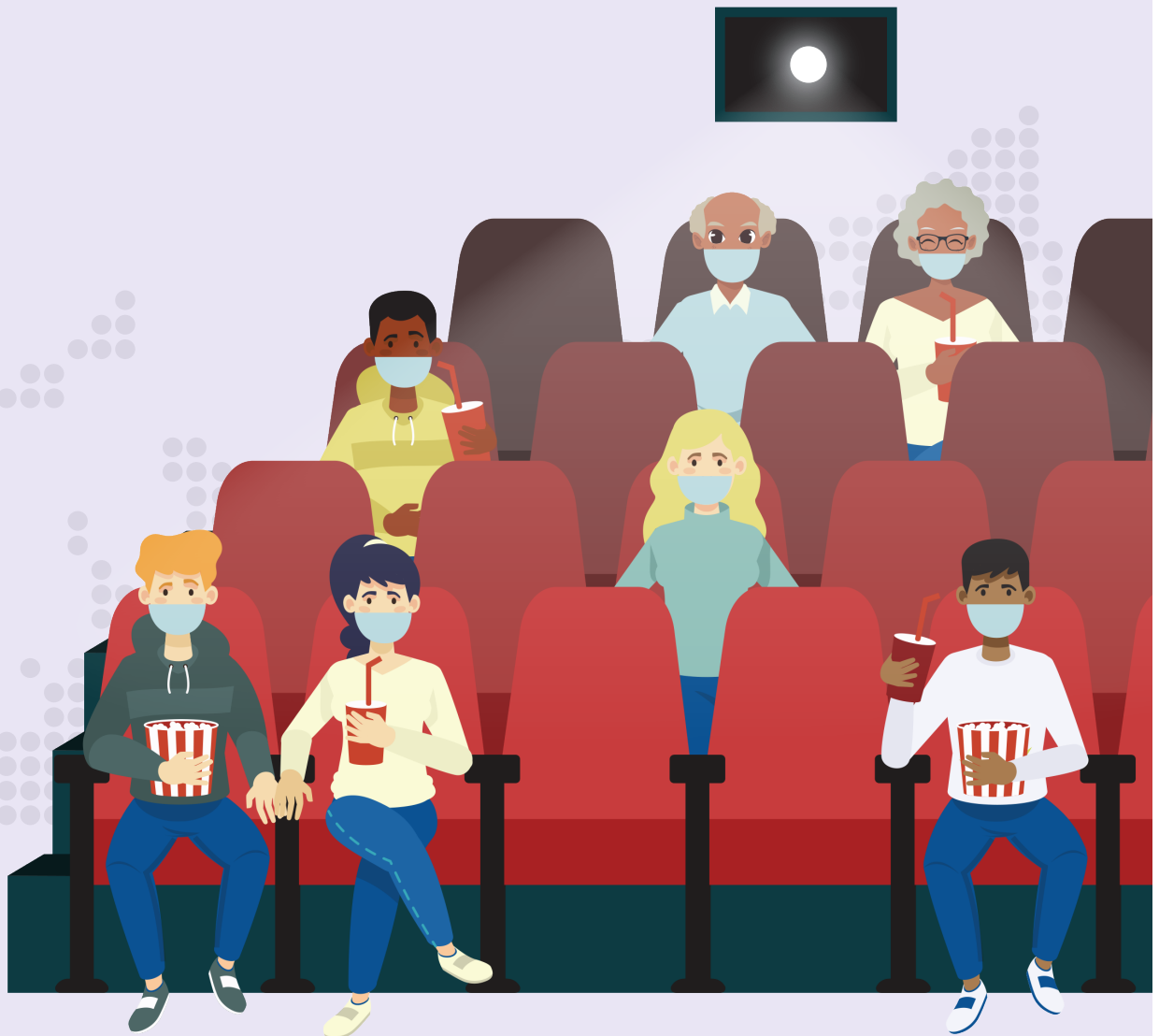


COVID-19 (Coronavirus)

Phase
3

Re-Opening Directions for Movie Theatres, Theatres, Museums, Libraries and Similar Places of Public Entertainment/Venues



Stay informed on the latest developments about COVID-19 by visiting the
Government of Bermuda's website coronavirus.gov.bm



GOVERNMENT OF BERMUDA
Ministry of Health

Re-Opening Directions for Movie Theatres, Theatres, Museums, Libraries and Similar Places of Public Entertainment/Venues

The following are minimum directions from the Ministry of Health for all movie theatres and similar venues. Venues may adopt additional protocols consistent with their specific needs and circumstances to help protect the health and safety of all employees and customers.

The virus that causes COVID-19 can be spread to others by infected persons who have few or no symptoms. Even if an infected person is only mildly ill, people they spread it to may become seriously ill or even die, especially if that person is 65 or older or has pre-existing health conditions placing them at higher risk. Because of the hidden nature of this threat, everyone should rigorously follow the practices specified in these protocols, all of which facilitate a safe and measured reopening of Bermuda.

Health protocols for serving your customers:

- Conduct a risk assessment of your operations.
- Develop a COVID-19 plan outlining all safety provisions.
- Utilize remote ticketing options to help manage capacity limitations and physical distancing.
- Warn clients on booking and by signs upon arrival, not to come to the facility if they have any COVID-19 symptoms.
- Contact information should be submitted for each patron*, in case contact tracing is needed. This can be via an online or contactless booking system. (**kept confidential- for contact tracing purposes only, one person for each party*).
- All staff must wear appropriate face masks/Personal Protective Equipment (PPE).
- Ensure proper physical distancing to allow 6 feet between patrons in the venue.
- Keep at least two empty seats (or six feet separation) between parties in any row, except as follows: - Two or more members of the same household can sit adjacent to one another, with two seats (or six feet separation) empty on either side. - Two individuals who are not members of the same household but who are attending together can sit adjacent to one another, with two seats (or six feet separation) empty on either side.
- Alternate rows between customers (every other row left empty).
- Disinfect seats and frequently touched areas and surfaces between screenings/events/groups.
- Adjust screening times/opening hours to allow time for enhanced cleaning and disinfection.

Theatres or venues with counter or similar food service for patrons:

- Provide condiments or flatware only in single use, individually-wrapped items, and provide pre-packed condiments only upon request.
- Have employees follow proper food-handling protocols.

- Disinfect any items that come into contact with customers, such as food trays, pens, card pin pads, etc.
- Contactless ordering and payment is encouraged. Where not available, contact should be minimized.
- Ensure physical distancing in any queues, consider marking queue areas accordingly.

Health protocols for your employees:

- Train all employees and contractors on appropriate cleaning and disinfection, mask/PPE wearing protocols, hand hygiene, and respiratory etiquette.
- Ensure all employees have taken the [Infection Prevention & Control \(IPC\)](#) training course and passed the test (minimum 80%). Maintain training records.
- Screen employees before coming into the theatre/venue.
- Send home any employee who has any of the following new or worsening signs or symptoms of possible COVID-19:
 - Cough
 - Shortness of breath or difficulty breathing
 - Chill
 - Repeated shaking with chills
 - Muscle pain
 - Headache
 - Sore throat
 - Loss of taste or smell
 - Diarrhea
 - Feeling feverish or a measured temperature greater than or equal to 100.4 degrees Fahrenheit
 - Known close contact with a person who is lab confirmed to have COVID-19 or under quarantine.
- Do not allow employees with new or worsening signs or symptoms listed above to return to work. Follow Health dept. guidelines for returning to work.
- Do not allow an employee with known close contact to a person who is lab confirmed to have COVID-19 to return to work until the end of the 14 day self-quarantine period from the last date of exposure. (*Department of Health guidelines should be followed*).
- Have employees wash or sanitize their hands upon entering the theatre/venue, and between interactions with customers.
- Have employees maintain at least 6 feet separation from other individuals. If such distancing is not feasible, other measures such as erection of Plexi-glass screens e.g. at

counters, or face shields worn in addition to face masks. Hand hygiene, cough etiquette, cleanliness, and sanitation should be rigorously practiced.

- If a theatre/venue provides a meal for employees and/or performers, it is recommended to have the meal individually packed for each individual.

Health protocols for your theatre/venue facilities:

- All employees and customers should wear cloth face coverings (over the nose and mouth). Please follow the Ministry of Health [Guidance for Children and Face Coverings](#).
- Regularly and frequently clean and disinfect any regularly touched surfaces, such as doorknobs, tables, chairs, counters, seat backs, handrails and restrooms.
- Disinfect any items that come into contact with customers.
- Make hand sanitizer, disinfecting wipes, soap and water, or similar EPA approved disinfectant readily available to employees and customers on entry and at suitable locations.
- Place readily visible signs at the venue to remind everyone of best hygiene practices, mask wearing and physical distancing.
- Restrict access to restrooms to allow appropriate physical distancing.
- Designate an individual wholly or partially dedicated to ensuring the health protocols adopted by the theatre/venue are being successfully implemented and followed.

Drive-In venues:

Drive-in venues can follow the above principles, with the addition of:

- Keep vehicles separate to allow door opening either side of vehicles and 6 foot separation where possible.
- If food is available, see above guidelines on food service and ensure any temporary food stalls are appropriately licensed for the event/location. Waiter service is recommended for food service to vehicles.

References:

[Return to Work Guidance](#)

[Infection Prevention and Control Training Course](#)

[Cleaning and Disinfection Guidance](#)

Wearing masks

<https://www.gov.bm/mask-guidance>

** https://www.gov.bm/sites/default/files/11436_children_facemasks.pdf

Physical Distancing Guidelines

<https://www.gov.bm/sites/default/files/Social-Distancing.pdf>

Other information and guidelines:

www.coronavirus.gov.bm