

COVID-19 (Coronavirus)

Phase 4 Reopening of Bermuda from 1 July 2020

Version 5
Updated 3 September 2020

PHASE 4 – NEW NORMAL

Masks must be worn indoors. Masks must be worn outside if physical distancing cannot be maintained.

Gatherings

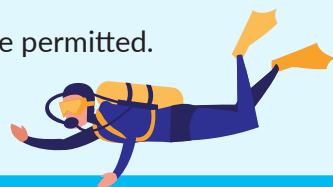
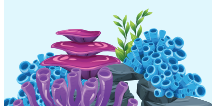
Permitted gatherings will increase to a maximum of 75 persons.

Airport

LF Wade International Airport will reopen for commercial flights.

Recreation

Scuba Diving will be permitted.



Nightclubs and Bars

Alcohol cannot be served in clubs and bars between 12 midnight and 8am.



Churches and Houses of Worship

Can give communion with appropriate health measures in place.

Government Buildings

Temperature taking as a precondition for entry into government buildings will end, however masks are still required.

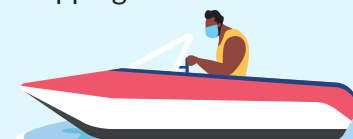
Grocery Shopping

Alphabetized grocery shopping ends.

Boats

Raft-ups are now limited to a maximum of 3 boats.

REMEMBER: Physical distancing is required on 'party boats'—as well as on private boats if households are mixed.



THE BERMUDA POLICE SERVICE AND ROYAL BERMUDA REGIMENT WILL BE MONITORING PHYSICAL DISTANCING AND PUBLIC HEALTH STANDARD COMPLIANCE.

PURSUANT TO POWERS PROPOSED TO BE GRANTED BY THE PUBLIC HEALTH (COVID-19 EMERGENCY POWERS) REGULATIONS 2020. THESE MEASURES CAN BE MODIFIED AS REQUIRED IN THE EVENT OF A PUBLIC HEALTH REQUIREMENT TO DO SO.

The Ministry of Health will provide guidance. All activities will be governed by strict physical distancing.



GOVERNMENT OF BERMUDA

Stay informed on the latest developments about COVID-19 by visiting the Government of Bermuda's website coronavirus.gov.bm