

DEPARTMENT OF PARKS  
2023 CONCESSION LOCATIONS

# ADMIRALTY HOUSE



Site 2: 10ft x 10ft



Site 1: 15ft x 10ft





# CHURCH BAY



Site 1: 15ft x 10ft



Site 2: 15ft x 10ft



# ELBOW BEACH



Site 1: 15ft x 10ft





# GOVERNMENT WATERFRONT



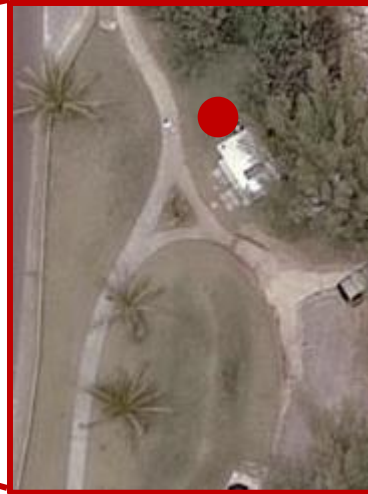
Site 1: 15ft x 10ft



# JOHN SMITH'S BAY



Site 1: 15ft x 10ft



Site 2: 15ft x 10ft

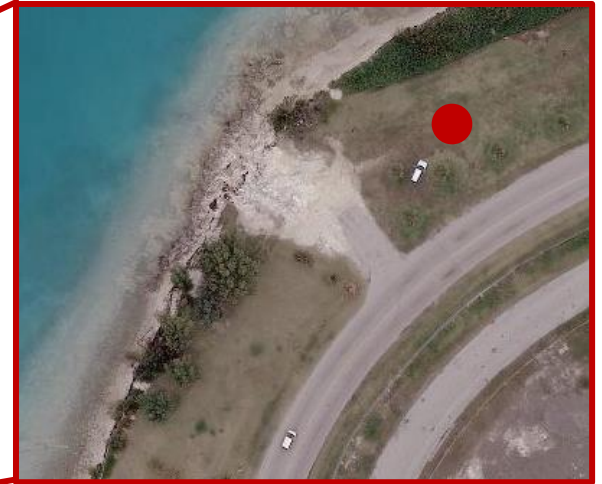




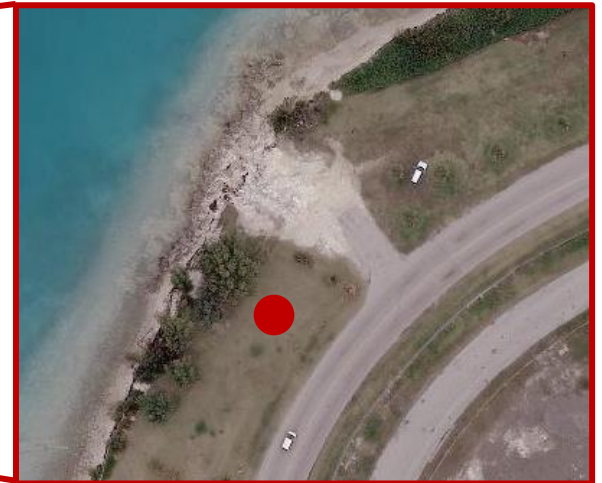
# KINDLEY FIELD PARK (PART 1)



Site 2: 20ft x 10ft



Site 1: 20ft x 10ft



## KINDLEY FIELD (PART 2)



Site 4: 20ft x 10ft



Site 3: 20ft x 10ft





# PARSONS ROAD PARK



Site 1: 15ft x 10ft



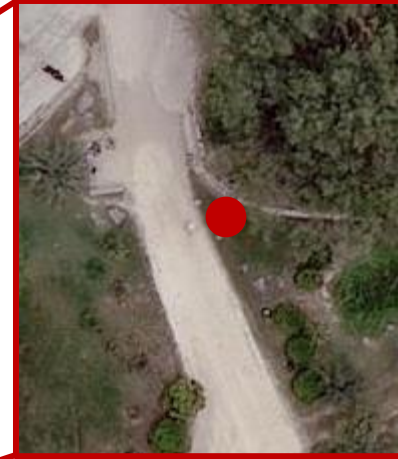
Site 2: 15ft x 10ft



# HORSESHOE BAY



Site 1: 10ft x 10ft



Site 2: 10ft x 10ft





# CHAPLIN BAY



Site 1: 20ft x 10ft



# WARWICK LONG BAY BEACH



Site 1: 15ft x 10ft





# DANIEL'S HEAD BEACH PARK



Site 1: 10ft x 10ft



# DUCKING STOOL PARK



Site 1: 15ft x 10ft





# GREAT HEAD PARK (ST. DAVID'S BATTERY)



Site 1: 15ft x 10ft





# MANGROVE BAY



Site 1: 10ft x 10ft





# SHELLY BAY PARK



Site 1: 15ft x 10ft



Site 3: 15ft x 10ft



Site 2: 15ft x 10ft





# SOMERSET LONG BAY



Site 1: 15ft x 10ft





# PENHURST PARK



Site 1: 10ft x 10ft



# FERRY POINT PARK



Site 1: 15ft x 10ft

