



GOVERNMENT OF BERMUDA

Ministry of Public Works

---

**Architects Section**

Document v1.0/2021

**ANNEX E**

**Old Parks HQ Building at the Bermuda Botanical Gardens:  
EXISTING CONDITION PHOTOS OF THE BG LIBRARY**

As encountered on the 9-Jun-21 & 13-Jul-21 in Rooms 105 & 106 of the Former Lifeguards & Park Rangers Office), on the Ground Floor of the former Parks HQ Offices, 169 South Road, Paget DV 04



**Botanical Gardens Park | Old Parks HQ Office**

Location Map

A site review of former Parks HQ Bldg conducted on the 9<sup>th</sup> June & 13<sup>th</sup> July 2021 for the Department of Parks has revealed the following existing condition of the building and the BG Library.

Ground Floor Global House – Parks Dept | 43 Church Street | Hamilton, Bermuda HM 12

T: 441 295 5151 ext. 2349 | E: [dsimmons@gov.bm](mailto:dsimmons@gov.bm). W: [www.gov.bm](http://www.gov.bm)



GOVERNMENT OF BERMUDA

Ministry of Public Works

### Architects Section

Document v1.0/2021

#### 3.0 Photos (Refer to Drawing Sheet EC- 01 for a floor plan location of each area):



BGL- 01: Room 105, S1



BGL- 02: Room 105, S2, P1, B1- B4



BGL- 03: Room 105, P1



BGL- 04: Room 105, S2

Ground Floor Global House – Parks Dept | 43 Church Street | Hamilton, Bermuda HM 12

T: 441 295 5151 ext. 2349 | E: [dsimmons@gov.bm](mailto:dsimmons@gov.bm). W: [www.gov.bm](http://www.gov.bm)



GOVERNMENT OF BERMUDA

Ministry of Public Works

### Architects Section

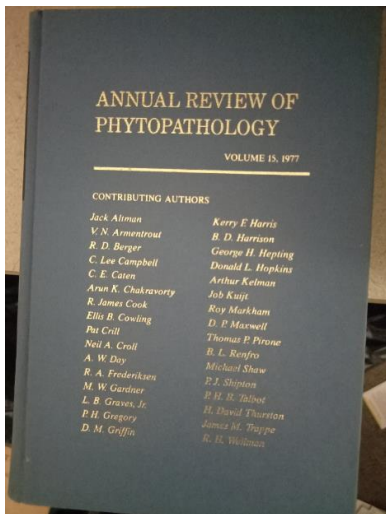
Document v1.0/2021



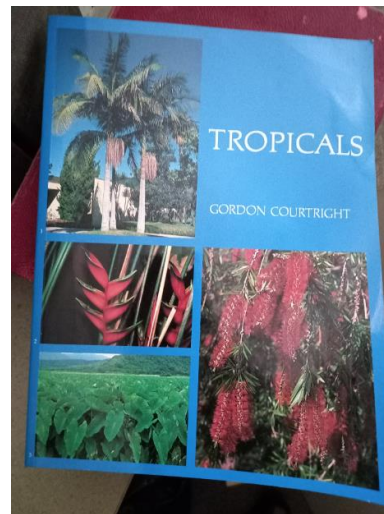
BGL- 05: Room 105, S2



BGL- 06: Room 105, D1



BGL- 07: Room 105, B1 - B4



BGL- 08: Room 105, D1

Ground Floor Global House – Parks Dept | 43 Church Street | Hamilton, Bermuda HM 12

T: 441 295 5151 ext. 2349 | E: [dsimmons@gov.bm](mailto:dsimmons@gov.bm). W: [www.gov.bm](http://www.gov.bm)





GOVERNMENT OF BERMUDA

Ministry of Public Works

## Architects Section

Document v1.0/2021



BGL- 09: Room 105, D1



BGL- 10: Room 105, S1



BGL- 11: Room 105, C1 (front)



BGL- 12: Room 105, C1 (rear)

Ground Floor Global House – Parks Dept | 43 Church Street | Hamilton, Bermuda HM 12

T: 441 295 5151 ext. 2349 | E: [dsimmons@gov.bm](mailto:dsimmons@gov.bm) W: [www.gov.bm](http://www.gov.bm)



GOVERNMENT OF BERMUDA

Ministry of Public Works

**Architects Section**

Document v1.0/2021



BGL- 13: Room 105, D2



BGL- 14: Room 105, D2



BGL- 15: Room 105 near S3



BGL- 16: Room 105, S3

Ground Floor Global House – Parks Dept | 43 Church Street | Hamilton, Bermuda HM 12

T: 441 295 5151 ext. 2349 | E: [dsimmons@gov.bm](mailto:dsimmons@gov.bm). W: [www.gov.bm](http://www.gov.bm)



GOVERNMENT OF BERMUDA

Ministry of Public Works

### Architects Section

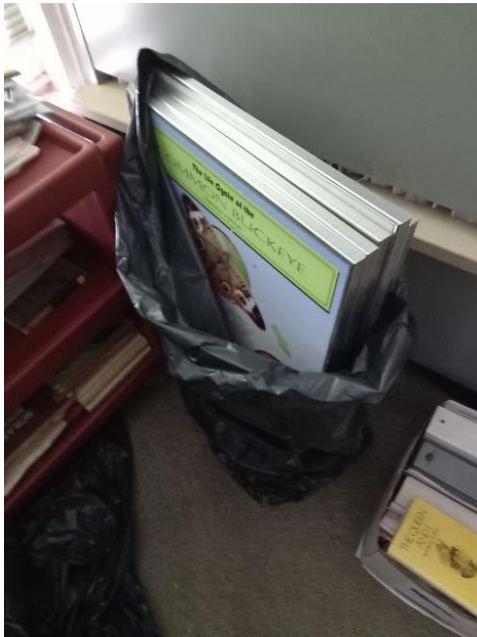
Document v1.0/2021



BGL- 17: Room 105, D2



BGL- 18: Room 105, D2



BGL- 19: Room 105, S3 & B9



BGL- 20: Room 105, D3, X1 & P2

Ground Floor Global House – Parks Dept | 43 Church Street | Hamilton, Bermuda HM 12

T: 441 295 5151 ext. 2349 | E: [dsimmons@gov.bm](mailto:dsimmons@gov.bm). W: [www.gov.bm](http://www.gov.bm)





GOVERNMENT OF BERMUDA

Ministry of Public Works

### Architects Section

Document v1.0/2021



BGL- 21: Room 105, P2, X2 & X3



BGL- 22: Room 105, D3, S5 & P2



BGL- 23: Room 105, S5 – S7



BGL- 24: Room 105, S4, S5, X2-X3

Ground Floor Global House – Parks Dept | 43 Church Street | Hamilton, Bermuda HM 12

T: 441 295 5151 ext. 2349 | E: [dsimmons@gov.bm](mailto:dsimmons@gov.bm). W: [www.gov.bm](http://www.gov.bm)



**Architects Section**

Document v1.0/2021



BGL- 25: Room 105, D7



BGL- 26: Room 105, D7



BGL- 27: Room 105, D4 & D5



BGL- 28: Room 105, D5, D6 & X1- X11





GOVERNMENT OF BERMUDA

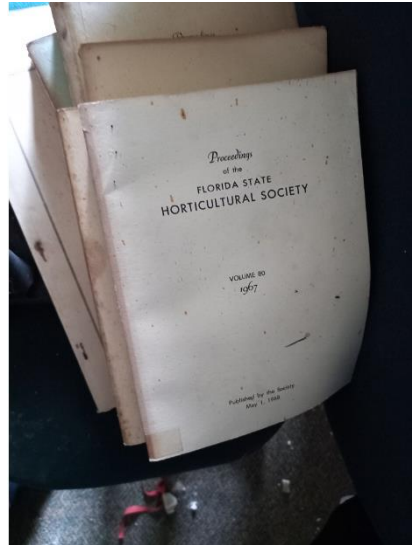
Ministry of Public Works

### Architects Section

Document v1.0/2021



BGL- 29: Room 105, S8



BGL- 30: Room 105, Chair near S8



BGL- 31: Room 105, S5, D7



BGL- 32: Room 105, D5, D6 & S8

Ground Floor Global House – Parks Dept | 43 Church Street | Hamilton, Bermuda HM 12

T: 441 295 5151 ext. 2349 | E: [dsimmons@gov.bm](mailto:dsimmons@gov.bm). W: [www.gov.bm](http://www.gov.bm)



GOVERNMENT OF BERMUDA

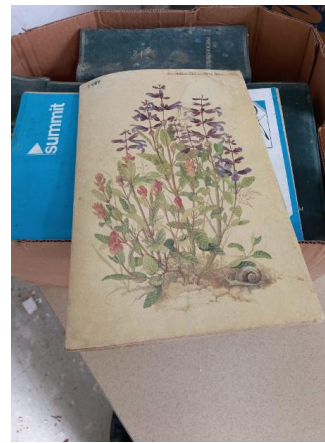
Ministry of Public Works

### Architects Section

Document v1.0/2021



BGL- 33: Room 105, Ceiling Damage



BGL- 34: Room 106, D8



BGL- 35: Room 106, D8



BGL- 36: Room 106, D8 & D9

Ground Floor Global House – Parks Dept | 43 Church Street | Hamilton, Bermuda HM 12

T: 441 295 5151 ext. 2349 | E: [dsimmons@gov.bm](mailto:dsimmons@gov.bm). W: [www.gov.bm](http://www.gov.bm)



GOVERNMENT OF BERMUDA

Ministry of Public Works

---

**Architects Section**

Document v1.0/2021



BGL- 33: West Elevation



BGL- 34: Southwest Elevation



BGL- 35: South Elevation



BGL- 36: South Elevation

Ground Floor Global House – Parks Dept | 43 Church Street | Hamilton, Bermuda HM 12

T: 441 295 5151 ext. 2349 | E: [dsimmons@gov.bm](mailto:dsimmons@gov.bm). W: [www.gov.bm](http://www.gov.bm)





GOVERNMENT OF BERMUDA

Ministry of Public Works

**Architects Section**

Document v1.0/2021



BGL- 33:Southeast Elevation



BGL- 34: Northeast Elevation



BGL- 35: Northwest Elevation



BGL- 36: North Elevation

**Report signature:** \_\_\_\_\_ **Date** \_\_\_\_\_

**Title:** \_\_\_\_\_

**DISTRIBUTION:**

File  
Director of Parks / Chief Surveyor, Department of Public Lands & Buildings  
Ministry of Public Works

Ground Floor Global House – Parks Dept | 43 Church Street | Hamilton, Bermuda HM 12

T: 441 295 5151 ext. 2349 | E: [dsimmons@gov.bm](mailto:dsimmons@gov.bm). W: [www.gov.bm](http://www.gov.bm)