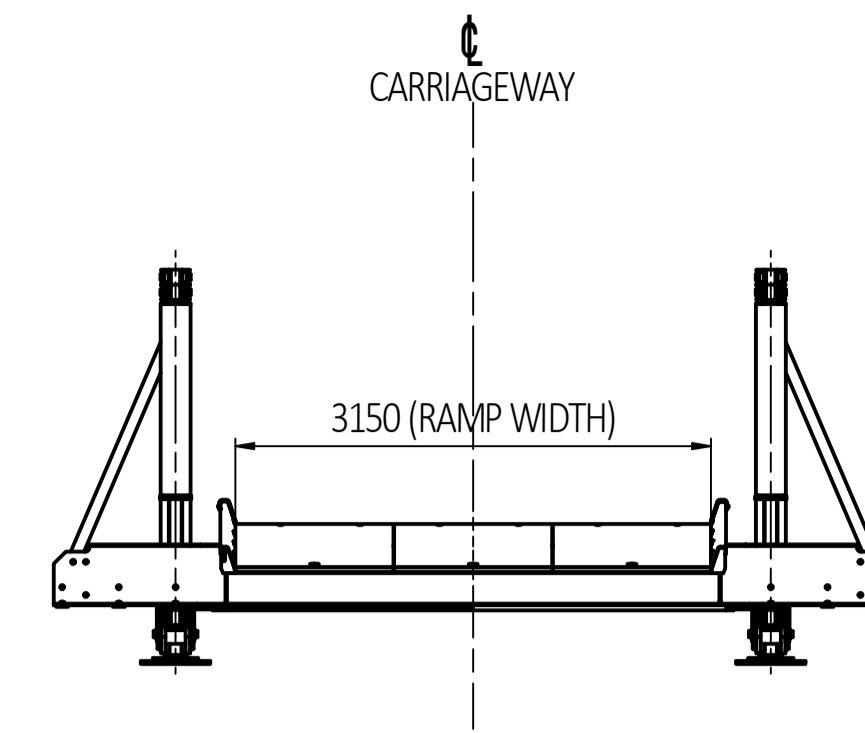
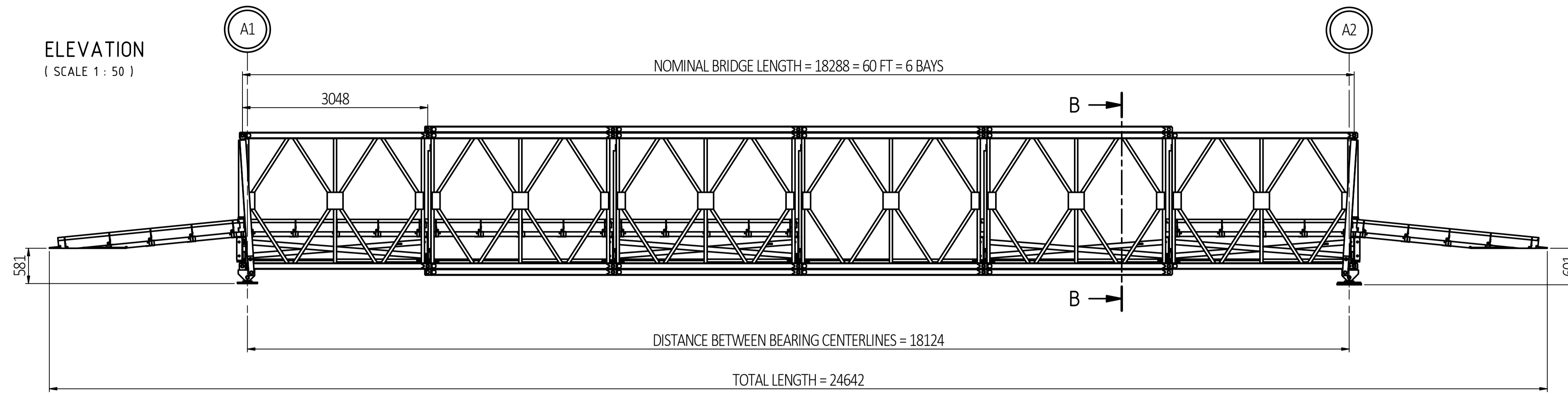
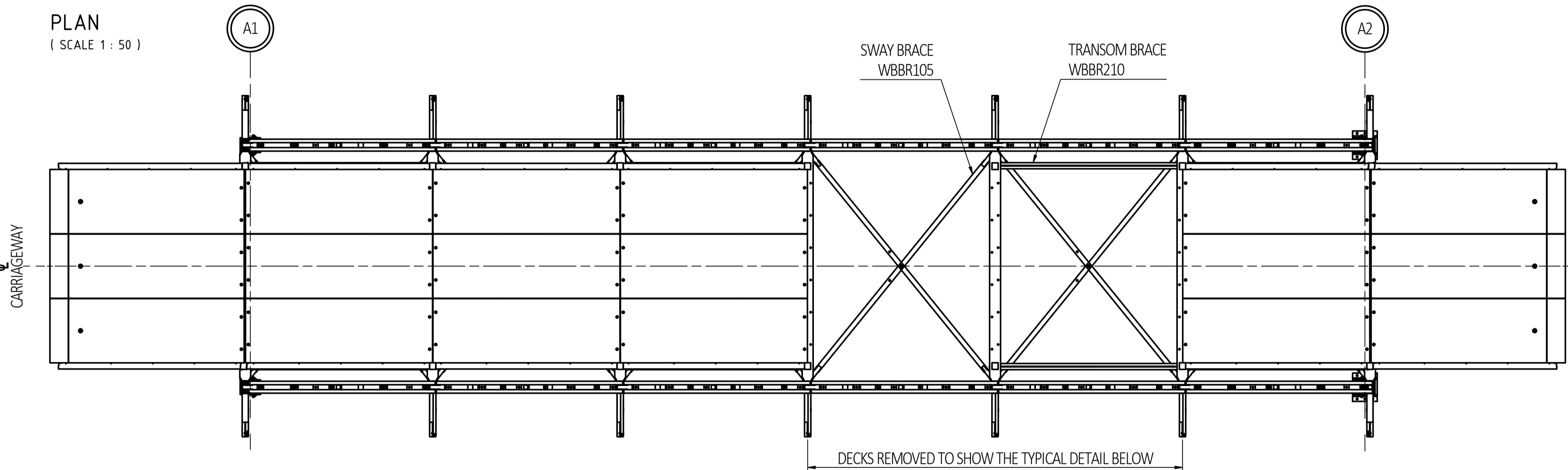


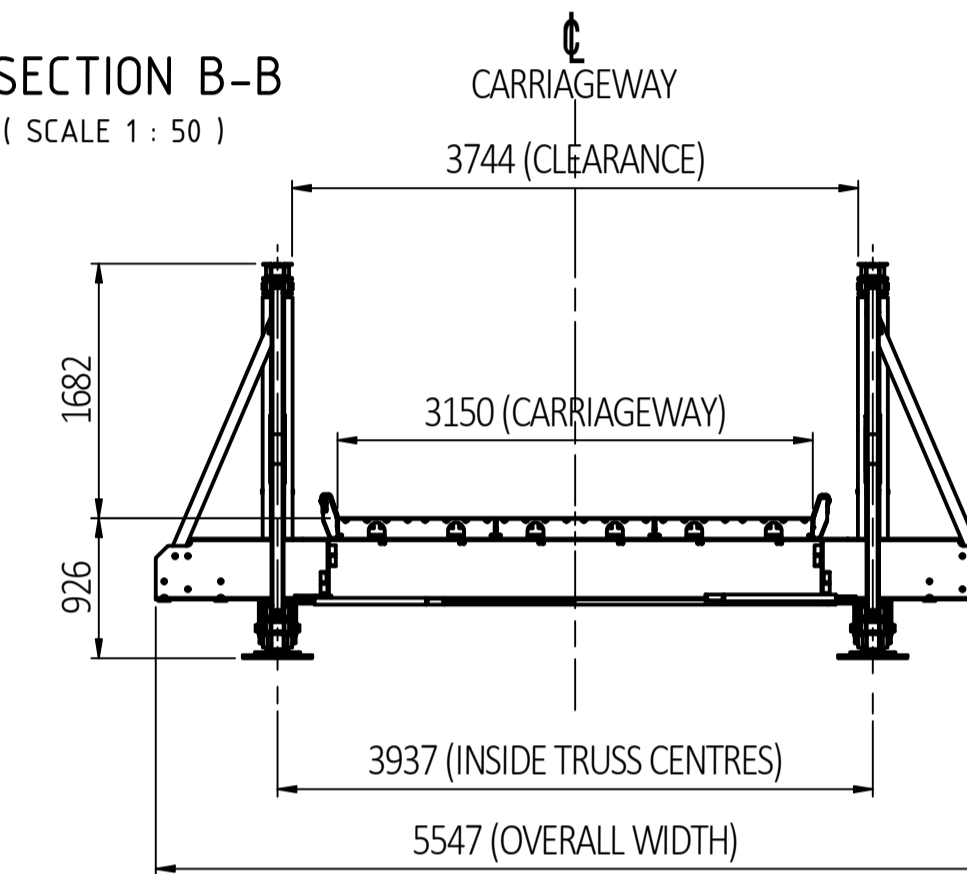
ELEVATION
(SCALE 1 : 50)



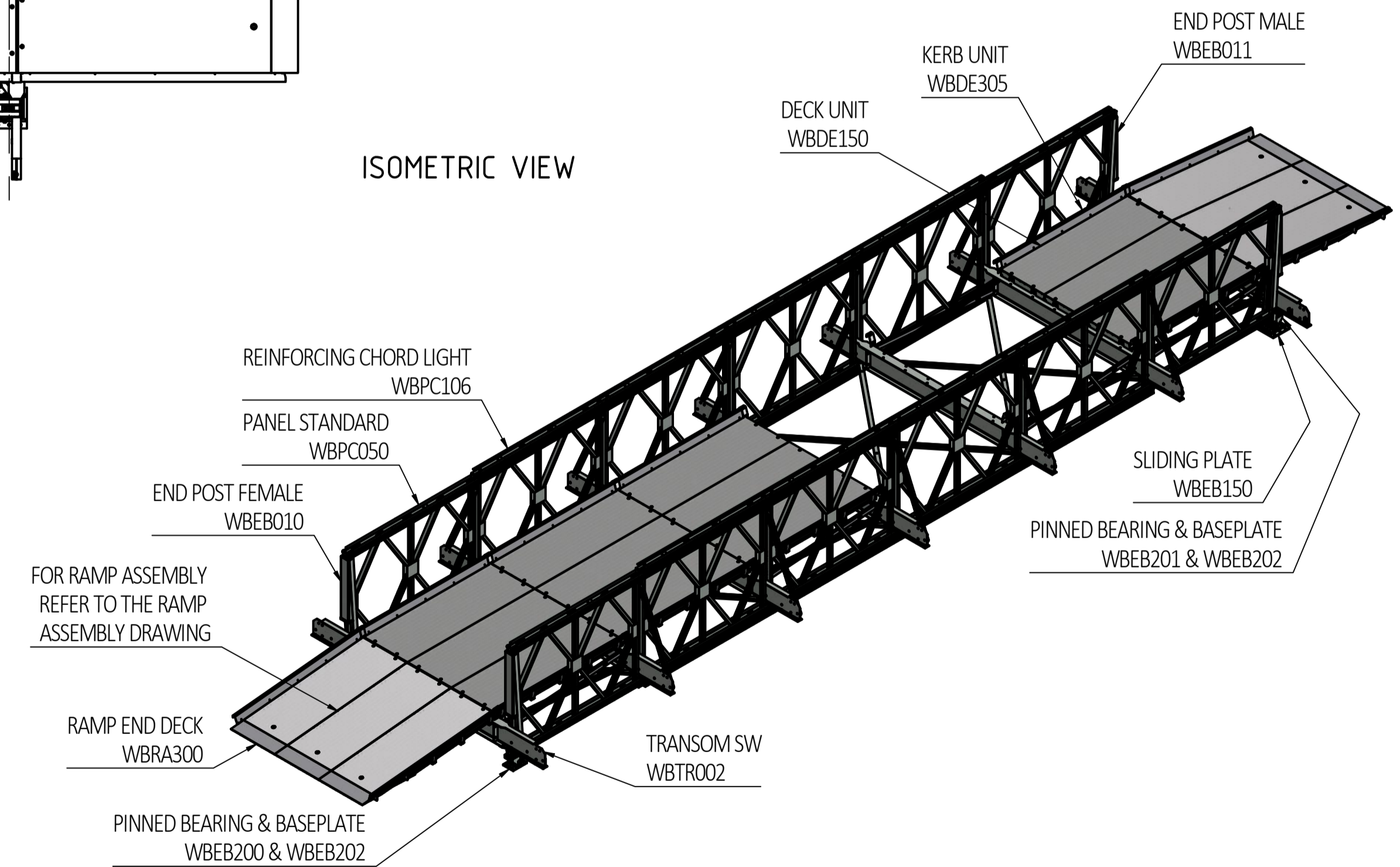
PLAN
(SCALE 1 : 50)



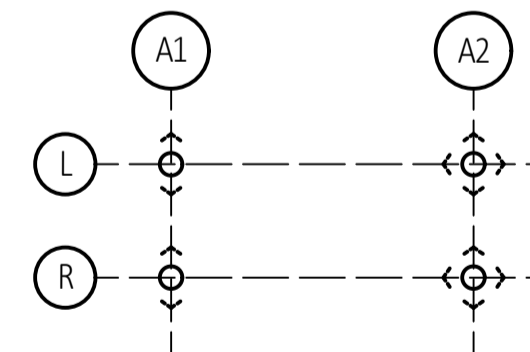
SECTION B-B
(SCALE 1 : 50)



ISOMETRIC VIEW



BEARING SCHEMATIC



LOAD CASE	REACTION FORCE TABLE [kN]											
	A1L			A1R			A2L			A2R		
	FIXED BEARING			FIXED BEARING			SLIDING BEARING			SLIDING BEARING		
	X	Y	Z	X	Y	Z	X	Y	Z	X	Y	Z
DEAD LOAD	-	-	-38	-	-	-38	-	-	-38	-	-	-38
LIVE LOAD	± 55	-	-266	± 55	-	-266	± 55	-	-266	± 55	-	-266
WIND LOAD	acting in ± X	± 18	-	± 18	-	-	-	-	-	-	-	-
	acting in ± Y	-	± 37	± 11	-	± 37	± 11	-	± 37	± 11	-	± 37
	acting in ± Z	-	-	± 17	-	± 17	-	± 17	-	± 17	-	± 17
TEMPERATURE	± 11	-	-	± 11	-	-	± 11	-	-	± 11	-	-

ALL REACTION FORCES ON THE TABLE ABOVE ARE UNFACTORED (CHARACTERISTIC)
 TEMPERATURE EFFECTS ARE CONSIDERED AS 30% FRICTION (STEEL ON STEEL) OF THE DEAD LOAD REACTION
 THE WIND LOAD IN THE Y DIRECTION IS CONSIDERED WITH A PRESSURE OF 75 PSF (3,59 KN/M²) AS PER AASHTO STANDARD 3.15.1
 THE WIND LOAD IN THE X DIRECTION IS CONSIDERED AS 25% OF THE VALUE OF THE LOAD IN Y DIRECTION (AASHTO LRFD 3.8.1.2.3)
 THE WIND LOAD IN THE Z DIRECTION IS CONSIDERED AS 0,020 KSF (1,16 KN/M²) (AASHTO LRFD 3.8.2)

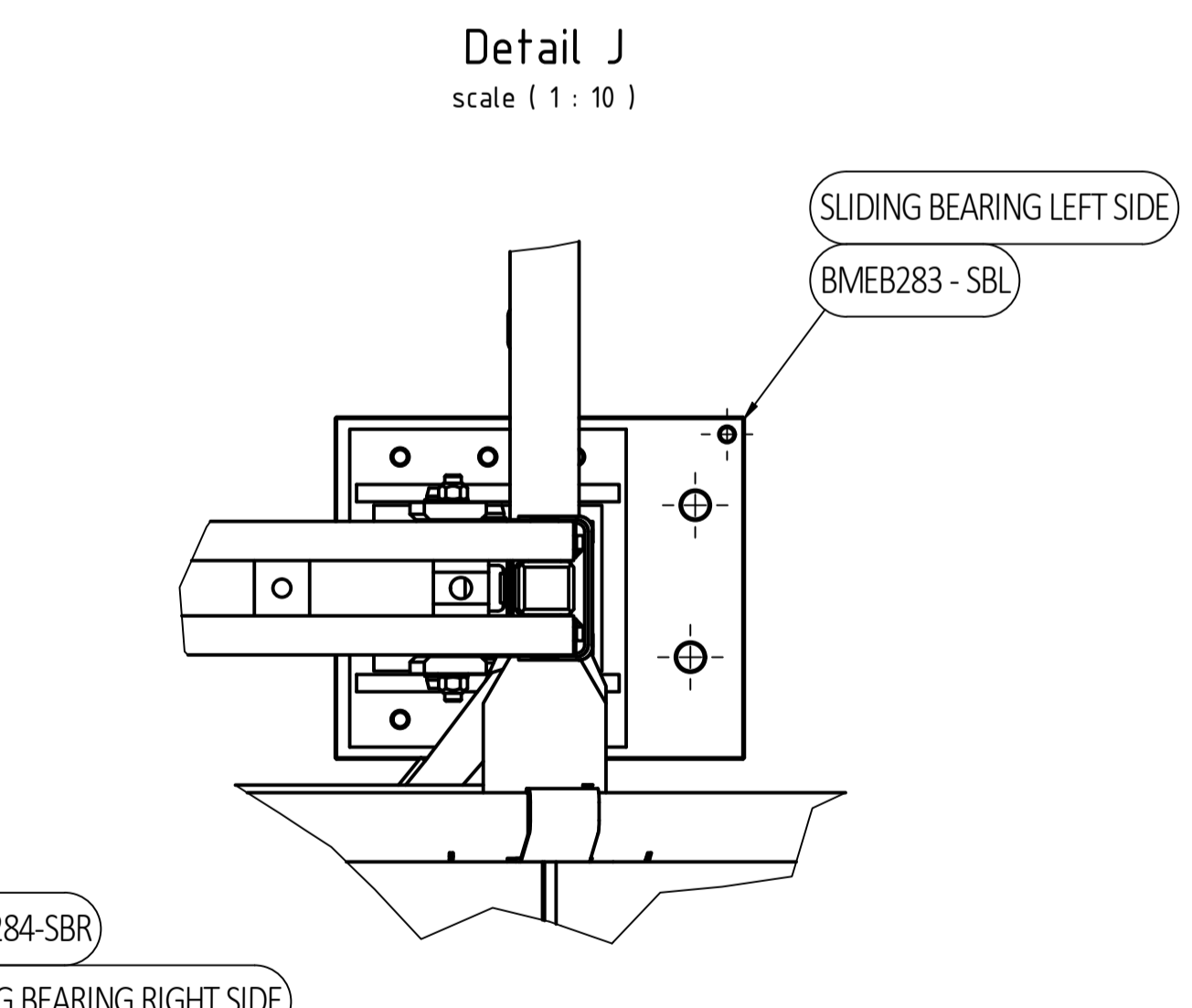
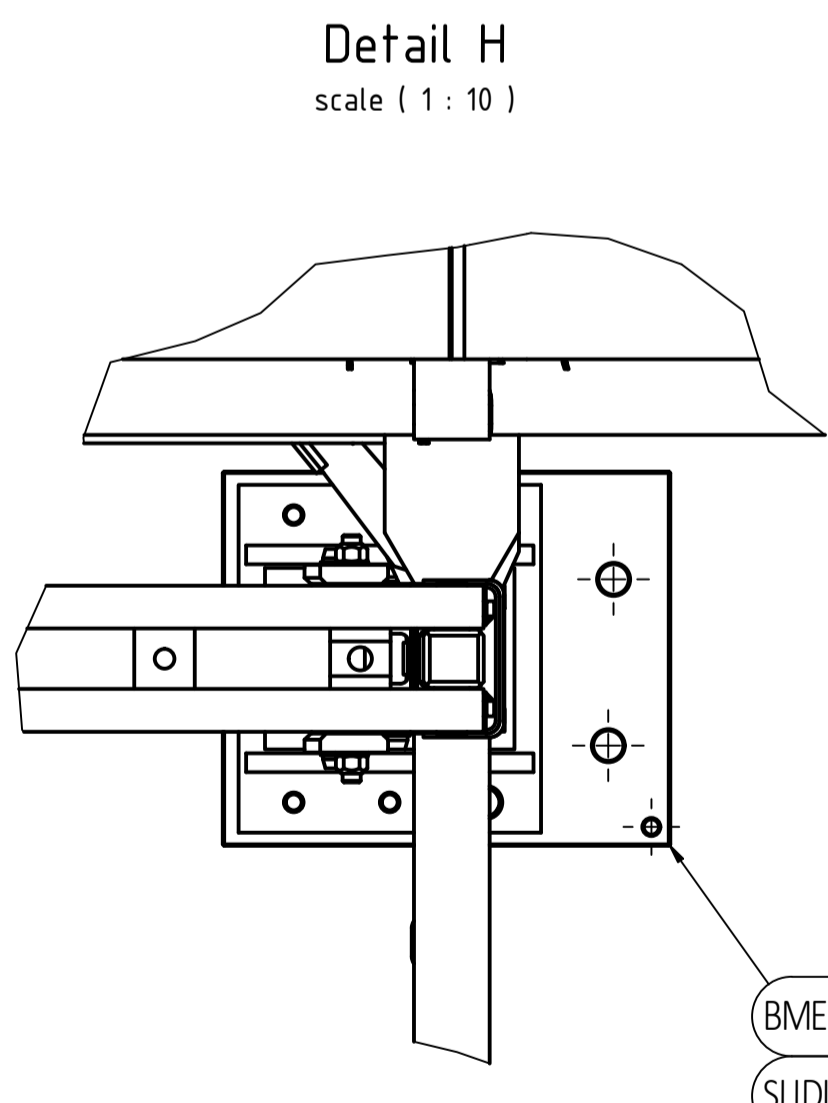
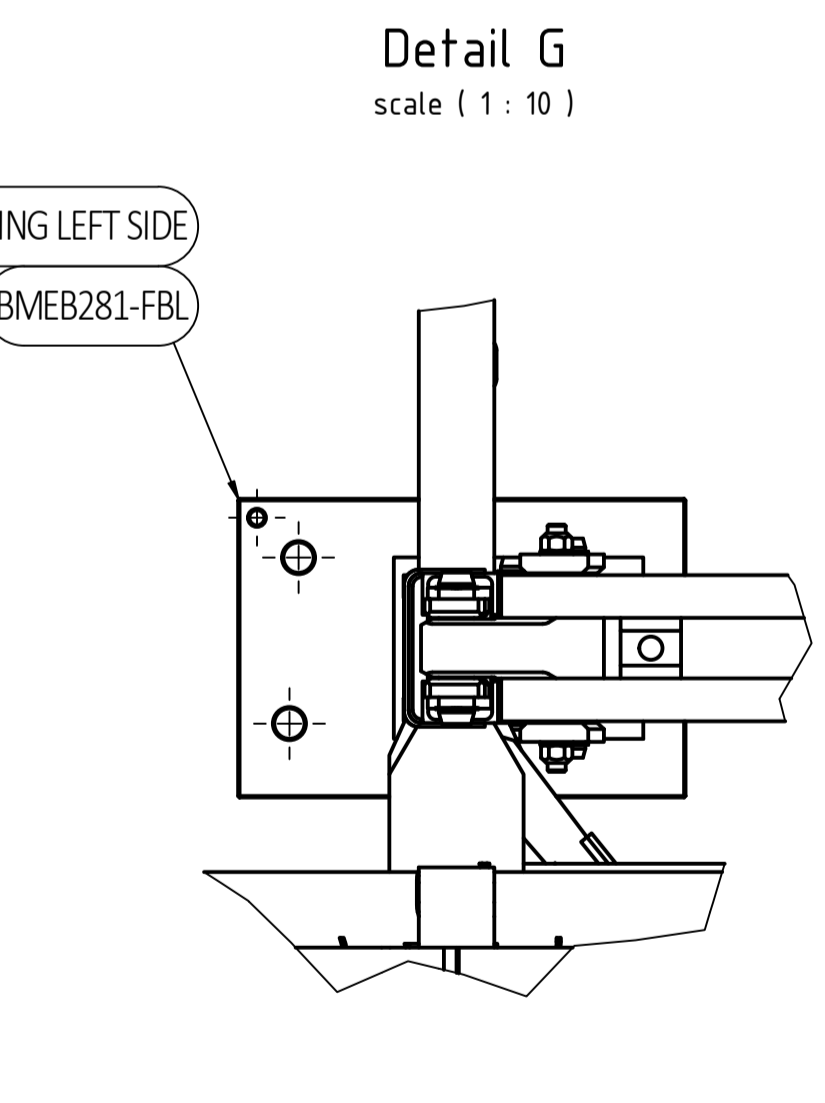
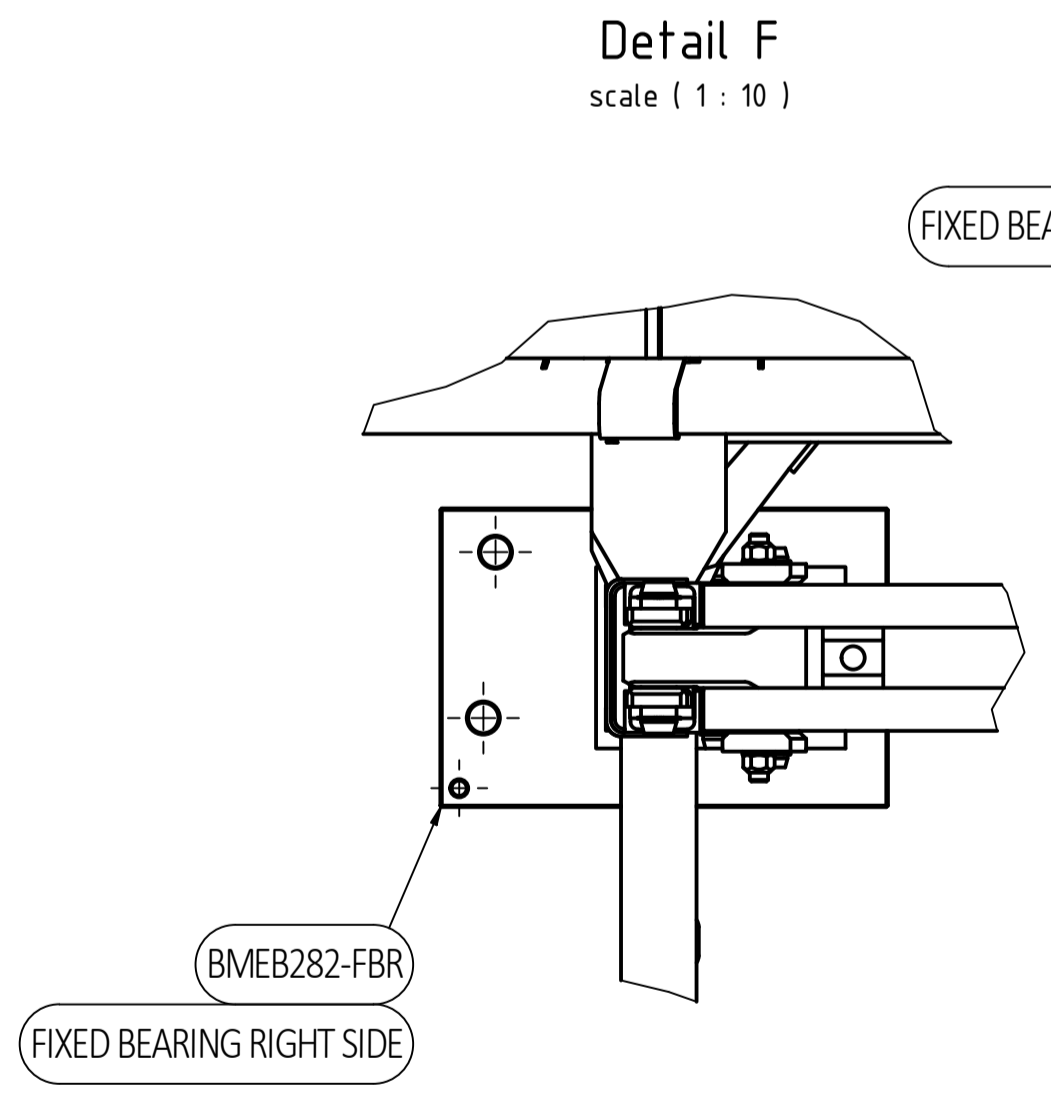
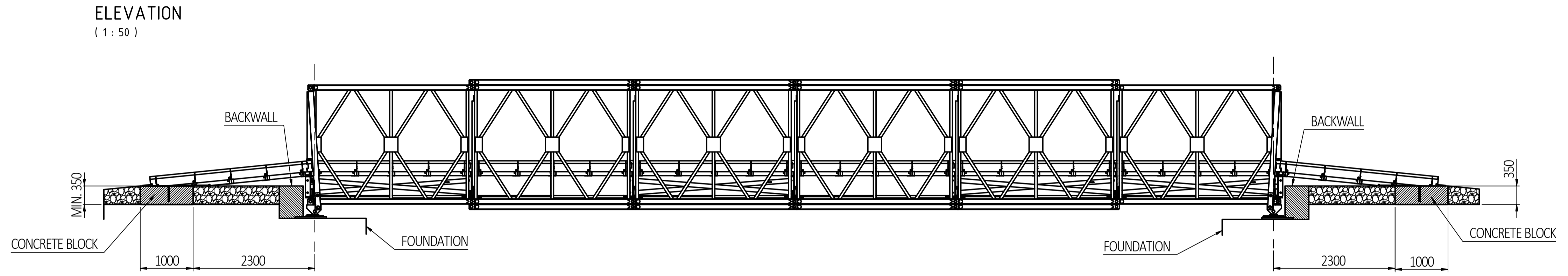
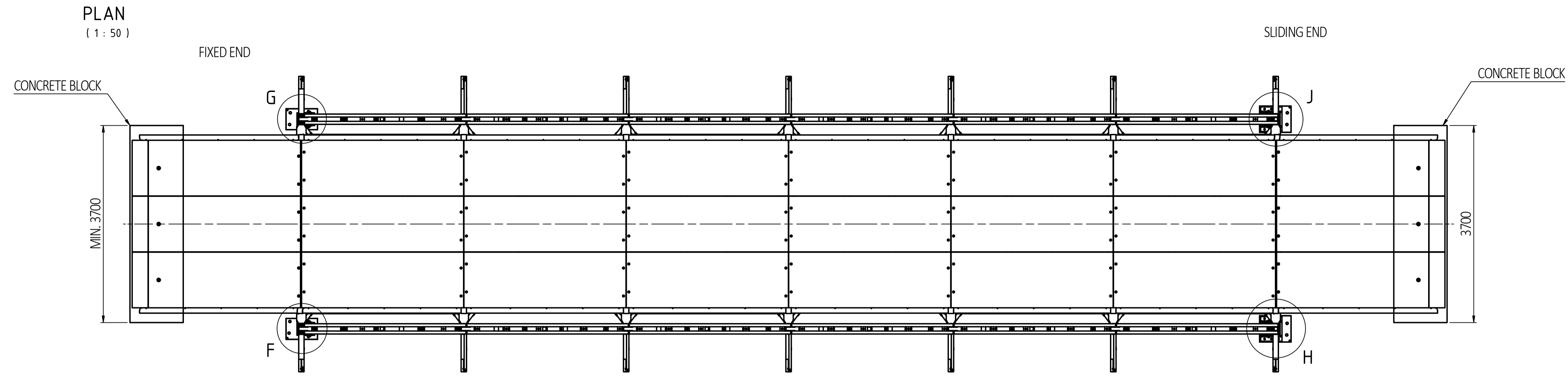
GENERAL NOTES

- ALL DIMENSIONS ARE IN MM UNLESS NOTED OTHERWISE.
- DO NOT SCALE FROM THIS DRAWING.
- THE STAGE OF THE SET OF THE DRAWING IS C. CONTRACT STAGE.
- STANDARD PANEL LENGTH IS 3048 MM DEFINED ALSO IN IMPERIAL UNIT (10 FEET).
- THE ABUTMENTS, PIERS, AND FOUNDATIONS ARE ONLY INDICATIVE ON THESE DRAWINGS, SHOWING TYPICAL DETAILS TO BE DESIGNED BY OTHERS.
- THE DRAWING SHALL BE READ TOGETHER WITH THE WAAGNER-BIRO PANEL BRIDGE DESIGN AND ERECTION MANUAL, 2023.
- REGULAR AND STRICT SUPERVISION, INSPECTION, ASSESSMENT AND MAINTENANCE CONTRIBUTES TO SAFE OPERATION AND LONG PRODUCT LIFE.
- THE BRIDGE SHALL BE ASSEMBLED AND ERECTED WITH A SUPERVISION OF A COMPETENT PERSONNEL.

- PREPARATION FOR ALL TYPES OF CONSTRUCTION ACTIVITIES, SUCH AS ASSEMBLY, ERECTION, JACKING UP, OR LAUNCHING OF THE BRIDGE, SHALL FOLLOW ALL THE RELEVANT ISSUED SETS OF DRAWING AND THE PANEL BRIDGE MANUAL PROVIDED BY WBBS. ALL DRAWING SETS SHALL BE ISSUED FOR CONSTRUCTION (D. CONSTRUCTION PHASE).
- THE BRIDGE COMPONENTS ARE ZINC COATED HOT DIP GALVANIZED IN ACCORDANCE WITH ISO 1461 AND ADDITIONALLY COATED WITH DUPLEX COATING C5 FOR ALL MAIN PARTS OF THE BRIDGE.
- ALL BOLTS NEED TO BE SPANNER-TIGHTENED ONLY. THERE IS NO NEED TO TIGHTEN WITH A PREDEFINED TORQUE. ALL BOLTS ARE LOADED ON SHEAR. THE LOOSENING IS PREVENTED BY THE USE OF LOCK NUTS ACCORDING TO DIN 980 OR DIN 985.
- THE BRIDGE IS DESIGNED FOR STRENGTH ACCORDING TO AASHTO LRFD (8TH EDITION) 3.6.1.2.2 (HL-93 + UDL). DYNAMIC IMPACT FACTOR IS CONSIDERED AS 0.33
- SAFETY FACTORS ARE CONSIDERED AS 1.25 FOR DEAD LOAD AND 1.75 FOR LIVE LOAD

REFERENCE DRAWINGS:
1202-00-0092-04-050

FOR INFORMATION	30.09.2025	RFC	00
ABUTMENT DETAIL REMOVED	10.12.2025	RFC	CURRENT REVISION
REASON FOR ISSUE	ISSUE DATE	CHECKED BY	LANGUAGE
CLIENT	PROJECT NO	1202-00-0092-02-010	ENG
GOVERNMENT OF BERMUDA	PROJECT	WAAGNER BIRO PANEL BRIDGE	
DESIGNED BY LOB	TITLE	GENERAL ARRANGEMENT SSRL - SW - 60 FT +1 BAY RAMP PAIR	
ISSUED FOR CONSTRUCTION NOT FOR CONSTRUCTION	START DATE	30.09.2025	FORMAT
DESIGN STAGE	DRAWN BY	RFC	COUNTRY CODE
A. FEASIBILITY-PHASE	CHECKED BY	COJ	
B. TENDER-PHASE	DESIGNED BY	LOB	
C. CONTRACT PHASE	FORMAT	A1	
D. CONSTRUCTION-PHASE			
E. AS-BUILT-PHASE			



GENERAL NOTES
 1. FOR GENERAL NOTES REFER TO DRAWING 010.

DESIGN STAGE
 A. FEASIBILITY-PHASE
 B. TENDER-PHASE
 C. CONTRACT-PHASE
 D. CONSTRUCTION-PHASE
 E. AS-BUILT-PHASE

START DATE
 27.11.2025
 DRAWN BY
 RFC
 CHECKED BY
 COJ
 DESIGNED BY
 LOB
 FORMAT
 A1
 COUNTRY CODE

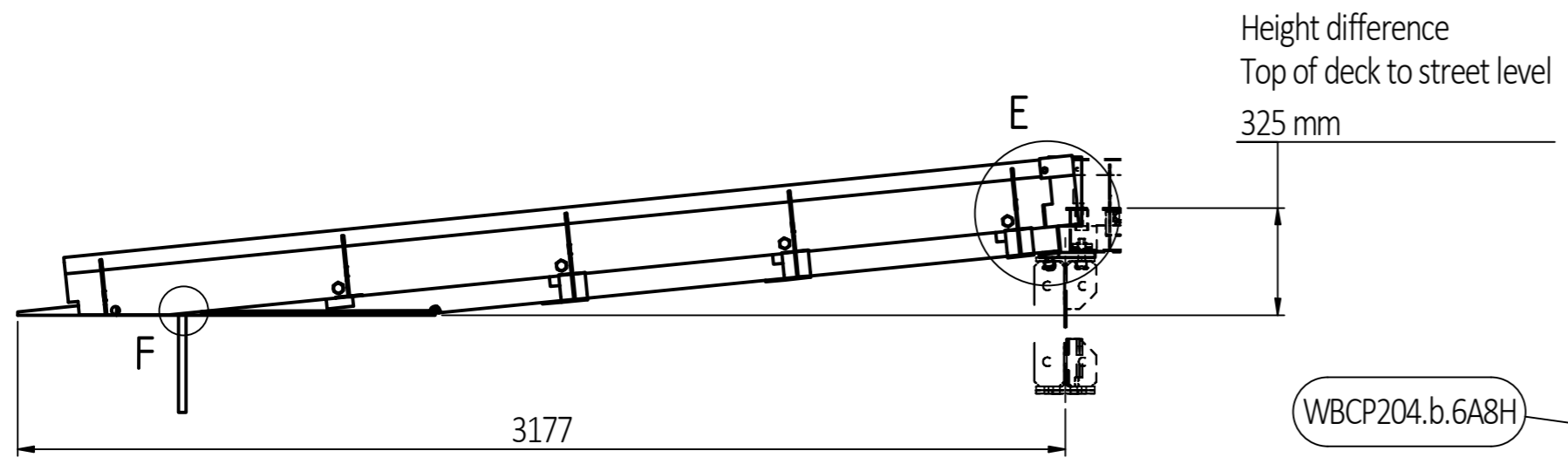
FOR INFORMATION
 REASON FOR ISSUE
 CLIENT

 GOVERNMENT OF BERMUDA

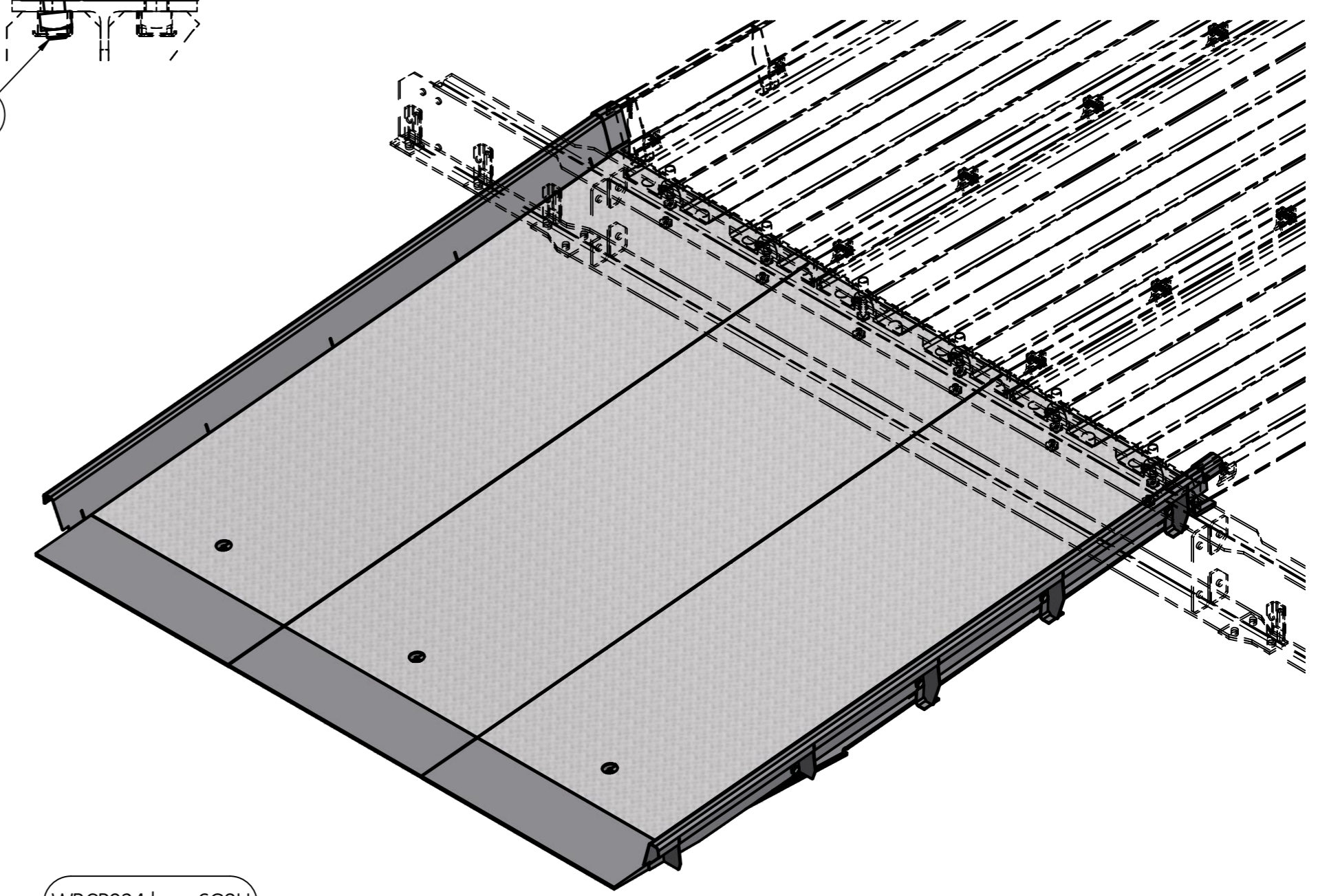
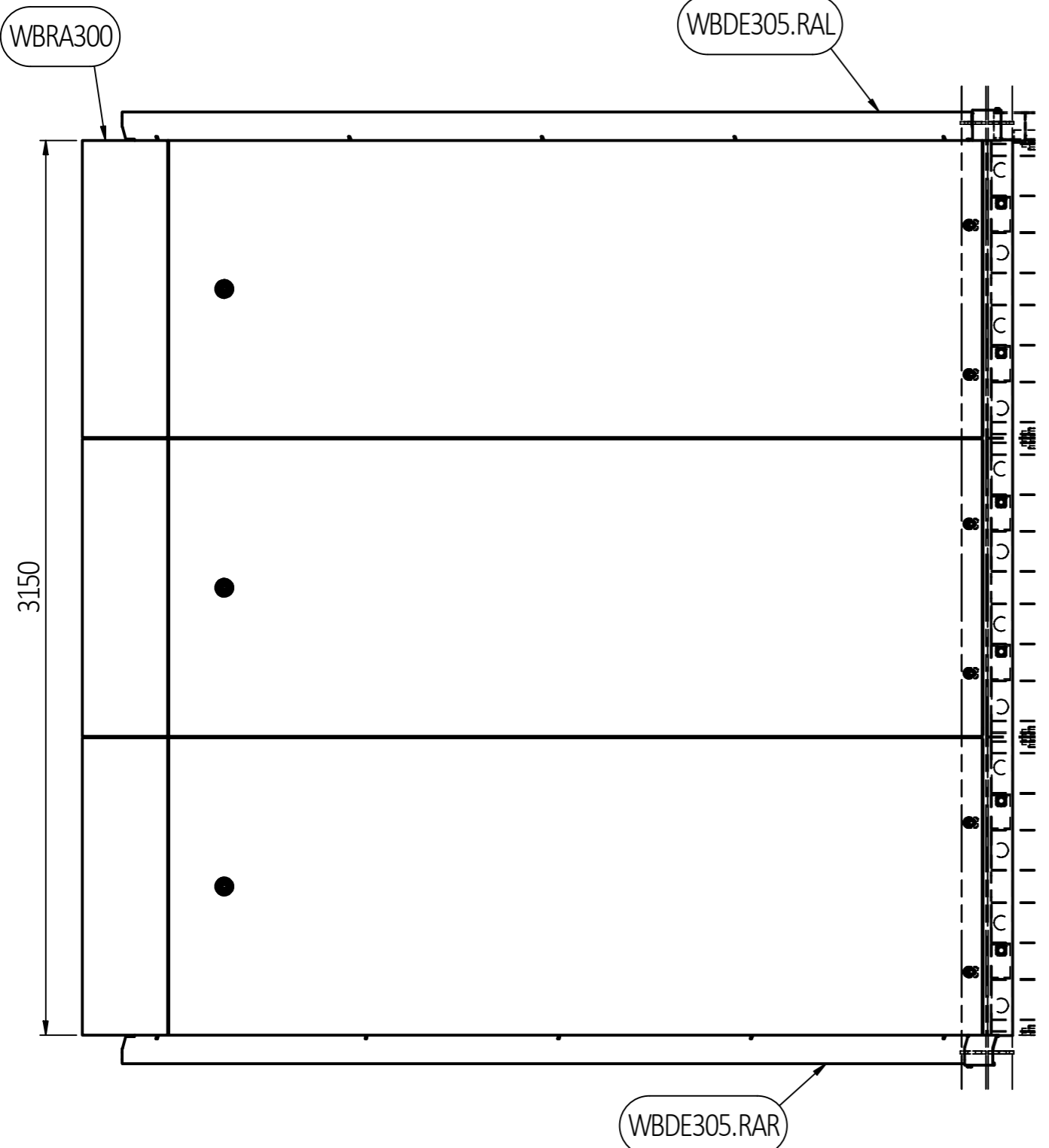
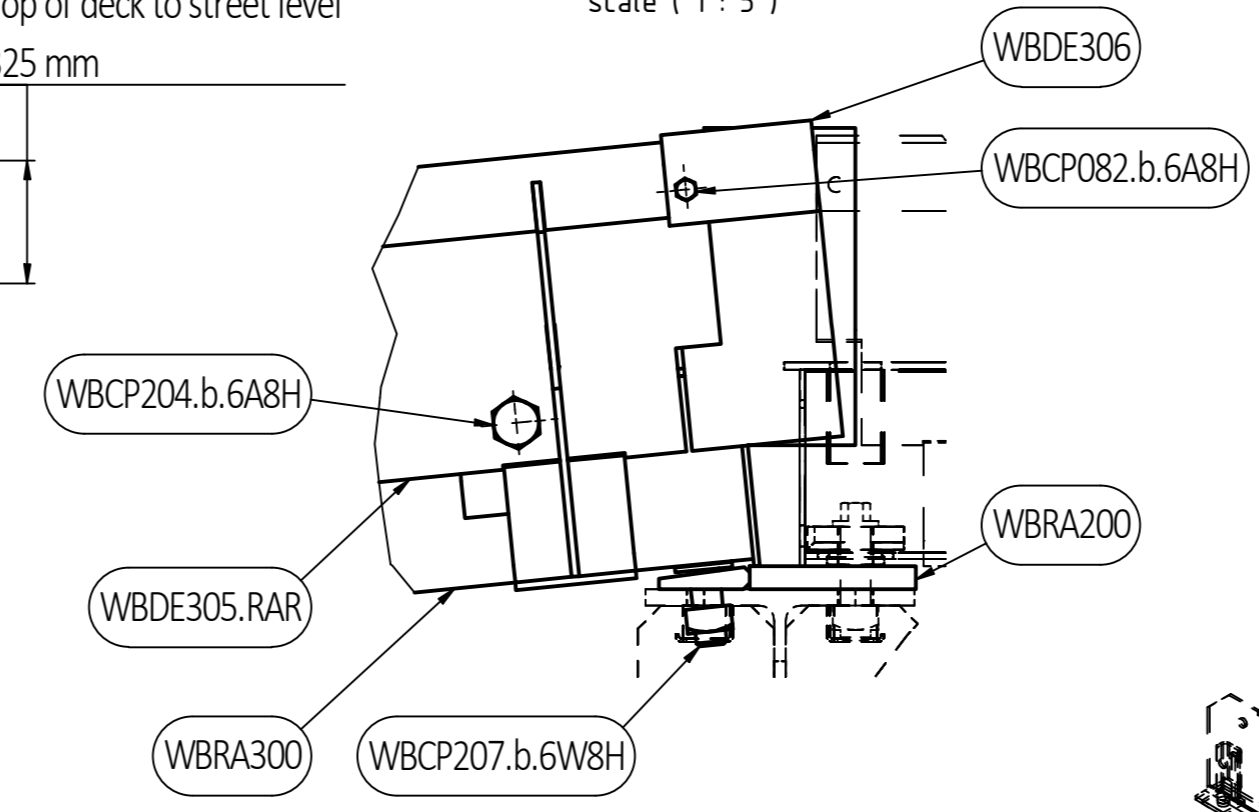
 Waagner-Biro Bridge Systems AG
 A-1010 Wien, Wipplingerstraße 25
 www.wagnerbiro-bridgesystems.com
 bridge@wb-bs.com

FOR INFORMATION	27.11.2025	RFC	CURRENT
REASON FOR ISSUE	ISSUE DATE	CHECKED BY	REVISION
CLIENT	PROJECT NO	LANGUAGE	
	1202-00-0092 - 02 - 011	ENG	00
	PROJECT	WAAGNER BIRO PANEL BRIDGE	
	TITLE	FOUNDATION DETAILS SSRL - SW - 60 FT +1 BAY RAMP PAIR	

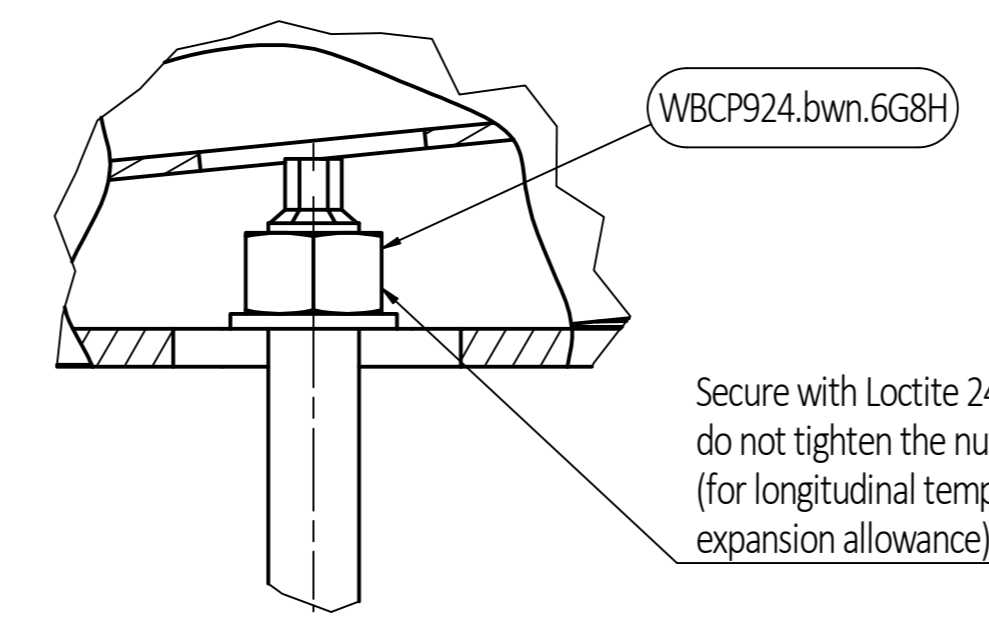
ISSUED FOR CONSTRUCTION
 NOT FOR CONSTRUCTION



Detail E
scale (1 : 5)



Detail F
scale (1 : 2)



Parts list

Part no.	Units	Name	Material	Weight
WBCP080.w.A14H	2	Washer; DIN 125, 8,4, 140HV, HDG	140 HV	0 kg
WBCP082.b.6A8H	2	Hex. head bolt; ISO 4017, M8x25, 8,8, HDG	8.8	0.02 kg
WBCP082.n.6A8H	2	Hex. head nut; ISO 4032, M8, 8, HDG	8	0.01 kg
WBCP200.n.4A5H	8	Square nut; DIN 557, M20, 5, HDG	5	0.08 kg
WBCP204.b.6A8H	8	Hex. head bolt; DIN 933; M20x40, 8,8, HDG	8.8	0.17 kg
WBCP200.n.4A5H	6	Square nut; DIN 557, M20, 5, HDG	5	0.08 kg
WBCP207.b.6W8H	6	Hex. head bolt; WBBS deck bolt, M20x75, 8,8, HDG	8.8	0.23 kg
WBCP924.bwn.6G8H	3	Anchor M24x350, 8,8, HDG (incl.washer & nut) + injection mortar (e.g. Fischer FIS EM Plus)	8.8	1.37 kg
WBDE305.RAL	1	Kerb for Ram End Deck - left	see shop drawing	38.52 kg
WBDE305.RAR	1	Kerb for Ramp End Deck - right	see shop drawing	38.52 kg
WBDE306	2	Kerb Connector	see shop drawing	1.24 kg
WBRA200	1	Ramp Plate	see shop drawing	42.66 kg
WBRA300	3	Ramp End Deck for 3-bay ramp SW + EW	see shop drawing	357.32 kg

INDEX	ÄNDERUNG MODIFICATION	UNTERSCHRIFT SIGNATURE	DATUM DATE	UNTERSCHRIFT SIGNATURE	DATUM DATE

ZEICHNUNG URHEBERRECHTLICH GESCHÜTZT. DIESE UNTERLAGE IST EIGENTUM DER WAAGNER-BIRO BRIDGE SYSTEMS GMBH, JEDE VERWERTUNG VERVIELFÄLTIGUNG, VERBREITUNG, VERÖFFENTLICHUNG UND VORFÜHRUNG DARF NUR MIT AUSDRÜCKLICHER ZUSTIMMUNG DER EIGENTÜMERIN ERFOLGEN. DRAWING SUBJECT TO COPYRIGHT. THIS DOCUMENT IS THE PROPERTY OF WAAGNER-BIRO BRIDGE SYSTEMS GMBH, IT MAY NOT BE USED, REPRODUCED, DISTRIBUTED, PUBLISHED AND EXHIBITED WITHOUT THE EXPRESS CONSENT OF THE OWNER.

<p>Waagner-Biro Bridge Systems GmbH, A-1010 Wien, Wipplingerstraße 25 TEL: +43/1/288 44-0, Website: www.waagnerbiro-bridgesystems.com FAX: +43/1/288 44-333, Email: bridge@waagnerbiro-bridgesystems.com</p>	KONSERVIERUNG: see specification		Proj. Met. 1
	SURFACE PROTECTION: see specification		gem. ISO 128
SPEZIF.: WBCQM001 & WBCQM002 SPEZIF.:	ABT. ME	NAME	DATUM
BESTELLER: GOUVERNEMENT OF BERMUDA	KONSTRUKTEUR: Nozinovic	UNTERSCHRIFT	DATE
BAUWERK: CONEY ISLAND	GEPRÜFT: Brcaninovic		01.10.2025
BENENNUNG: Assembly drawing	BERECHNUNGSING: STATIS. ENG.		
TITLE: 1-bay ramp - SW	PROJEKTLEITER: PROJECT MANAGER		
	AUSFÜHREN UNITS OFF	MASSE/AUSFG. MASS PER UNIT	kg
		GESAMTMASSE TOTAL MASS	kg
	HAUPTMASSTAB: 1:20	ERSATZ FÜR: SUBSTITUTION FOR:	FORMAT: A2
		ERSATZ DURCH: REPLACED BY:	
WB-PROJEKT NR./ PROJECT NO. 1202-02-0092-04-050-		ZEICHNUNG NR./ DRAWING NO. 00	
FILE NAME: SW-RA3.0m_BERMUDAS.iam		ÄNDERUNGSINDEX MODIFICATION INDEX	