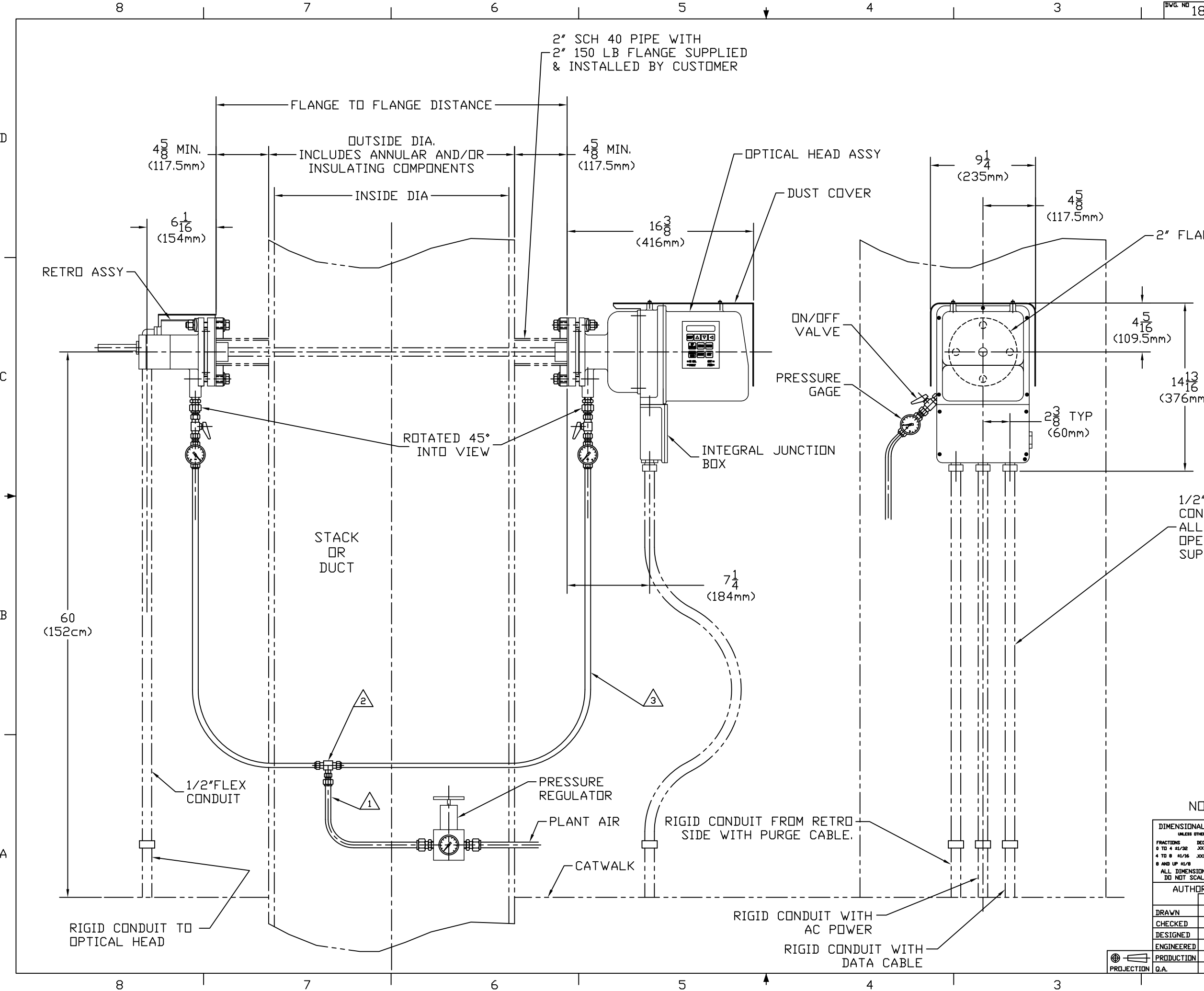


REVISIONS				
ZONE	SYM.	DESCRIPTION	DATE	APPD.
A		PER DCN #1800-0007A	4-17-00	ELM
B		NO CHANGE THIS SHEET	5-23-00	ELM
C		NO CHANGE THIS SHEET	6-7-00	ELM
D		NO CHANGE THIS SHEET	7-10-00	ELM
E		NO CHANGE THIS SHEET	2-13-02	ELM
F		PER DCN #1800-0007F	3-6-03	ELM
G		NO CHANGE THIS SHEET	10-23-03	FWD
H		NO CHANGE THIS SHEET	1-2-08	ELM
J		PER DCN #1800-0007J	10-1-08	ELM



1/2" FLEX CONDUIT (TYPE EF), 3 PLACES. CONDUIT MUST HAVE ENOUGH SLACK TO ALLOW THE OPTICAL HEAD TO SWING OPEN TO THE RIGHT FOR SERVICING. SUPPLIED AND INSTALLED BY CUSTOMER

- 3 CUSTOMER TO SUPPLY AND INSTALL 3/8 OD x 5/16 ID TUBING TO CARRY INSTR. AIR
- 2 CUSTOMER TO SUPPLY AND INSTALL 3/8 UNION TEE W/1/2-3/8 REDUCER
- 1 CUSTOMER TO SUPPLY AND INSTALL 1/2"OD x 3/8"ID x 6 FT LONG TUBE TO CARRY INSTRUMENT AIR FROM THE REGULATOR TO THE TEE. PLANT AIR SYSTEM TO SUPPLY A TOTAL FLOW OF 25 CFM MINIMUM AT A DYNAMIC PRESSURE OF 30PSI OR HIGHER @ THE REGULATOR. PRESSURE AT THE ON/OFF VALVES SHOULD BE THE SAME AS THE REGULATOR PRESSURE WITH THE VALVES CLOSED. PLANT PRESSURE MAY NEED TO BE HIGHER IF THERE ARE RESTRICTIONS UPSTREAM IN THE PLANT AIR SYSTEM. THE REGULATOR SHOULD BE RATED FOR HIGH FLOW.

NOTES: DIMENSIONS IN () ARE METRIC

DIMENSIONAL TOLERANCES UNLESS OTHERWISE SPECIFIED FRACTIONS DECIMALS ANGLES 0 TO 4 41/32 .001 45° 41/32 4 TO 8 41/64 .002 90° 41/64 8 AND UP 1/16 .005 RNS FINISH ALL DIMENSIONS ARE IN INCHES DO NOT SCALE THIS DRAWING		USED ON DASH NO NEXT ASSEMBLY -01	TELEDYNE MONITOR LABS A Teledyne Technologies Company THIS DOCUMENT CONTAINS INFORMATION PROPRIETARY AND CONFIDENTIAL TO TELEDYNE MONITOR LABS AND IS FURNISHED UPON THE EXPRESS CONDITION THAT THE INFORMATION CONTAINED HEREIN WILL NOT BE REPRODUCED, REPHRASED, SOLECIERD OR DISSEMINATED TO OTHERS OR USED FOR ANY PURPOSE OTHER THAN IN CONNECTION WITH THE EVALUATION THEREOF WITHOUT THE PRIOR WRITTEN CONSENT OF TELEDYNE MONITOR LABS.
AUTHORIZATION DRAWN EAS 11-3-97 CHECKED EAS 5-00 DESIGNED EAS NOV-97 ENGINEERED ELM 5-16-00 PRODUCTION MAR 5/16/00 Q.A. AS 5-16-00		TITLE LightHawk 560 OPACITY W/INSTR. AIR SYSTEM INSTALLATION FINISH	DRAWING NO. 1800-0007 LATEST REVISION J
SCALE 1/4 SHEET 1 OF 7		D	