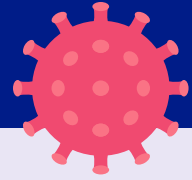


# COVID-19 (Coronavirus)



## COVID-19 FAQs: School/Childcare Facility “Bubbles”



### 1. What are school/childcare facility bubbles?

- Groups that children, teachers, paraeducators and care providers are placed in and must remain in throughout the day.
- For example, teachers and paraeducators assigned to one classroom must not enter other classrooms.

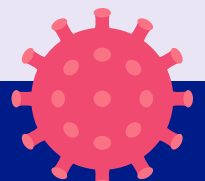
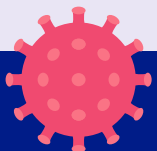
### 2. What is the purpose of school/childcare facility bubbles?

To keep possible COVID-19 infections in small groups and limit contact between groups. This thereby:

- Protects the health of the school/childcare facility population and the rest of the community.
- Makes contact tracing easier with less children involved.
- Avoids learning disruption by limiting quarantine to a bubble of close contacts only.

### 3. Who administers school/childcare facility bubbles?

The principal, teachers and care providers at each school/childcare facility, with the support of the Ministry of Health’s public health professionals.



# COVID-19 (Coronavirus)



#### 4. Why must children be in bubbles indoors, but not on school/childcare facility buses or while engaging in outdoor activities?

- According to the international legal doctrine of “in loco parentis” (which means “in the place of a parent”), school/childcare facility teachers are required to assume parental rights, duties and obligations while children are in their care.
- In order to do this effectively for an entire school/childcare facility, the standard of caution must be higher than the standard appropriate for smaller groups on buses or engaging in outdoor activities off the school/childcare facility premises.
- However, bubbles must be used for school/childcare facility sports and other activities when there is the potential for close contact over lengthy time periods.
- School/childcare facility bus journeys are generally not long, and since children are in protective bubbles throughout the day it is considered safe for them to travel together with masks on. Children are also not exposed to the random mix of passengers that travel on regular buses not designated for schools/childcare facilities.

#### 5. Are bubbles required in all schools/childcare facilities?

Yes. The same principle is followed in all schools/childcare facilities, although bubbles may be of various sizes and structures according to alternate learning systems.

#### 6. How long will school/childcare facility bubbles be mandatory?

As long as COVID-19 is recognized as a serious public health threat in Bermuda.

#### 7. Are bubbles only required in schools/childcare facilities?

No. Restaurants (for example) must restrict the number of guests at a table.

#### 8. Where can I find further public health guidance about COVID-19 in schools/childcare facilities?

Visit the school, childcare and camp guidance webpage: <https://www.gov.bm/coronavirus-schools>.

#### 9. Where can I find further public health guidance about COVID-19 generally?

Visit <https://www.gov.bm/coronavirus>.

**Stay informed on the latest developments about COVID-19 by visiting the Government of Bermuda’s website [coronavirus.gov.bm](https://www.gov.bm/coronavirus)**

