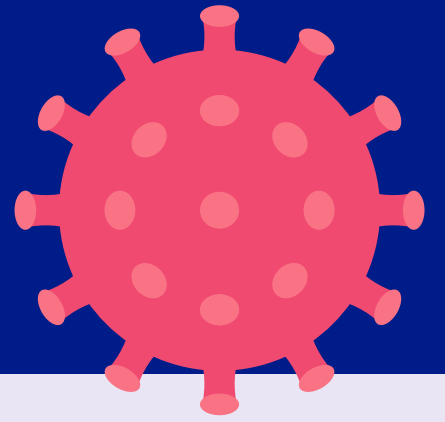


COVID-19

Coronavirus

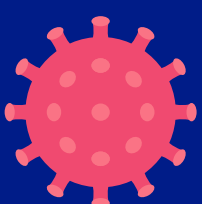


**Do you have: a cold,
cough, or fever?**



Have you recently travelled to a novel coronavirus (COVID-19) affected area or been in contact with a person who has COVID-19?

If you answered yes to any of these questions, please call before entering this facility and provide your history. We will then give you further instructions.



GOVERNMENT OF BERMUDA
Ministry of Health

