

COVID-19

(Coronavirus)

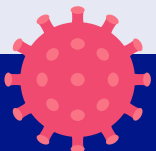


Phase
3-4

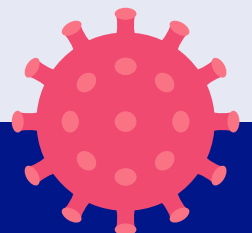
Covid-19 Guidance for School Settings



*Stay informed on the latest developments about COVID-19 by visiting the
Government of Bermuda's website [coronavirus.gov.bm](https://www.coronavirus.gov.bm)*



GOVERNMENT OF BERMUDA
Ministry of Health



COVID-19 is a disease caused by a novel coronavirus that can result in acute respiratory illness. The virus spreads when a sick person coughs or sneezes. It may also be possible for a person to get COVID-19 by touching contaminated surfaces and then touching their own mouth, nose, or possibly their eyes. Symptoms may include fever, cough, or shortness of breath. Children may have milder or asymptomatic infections of COVID-19, and the virus may still be transmitted to other people. For more general information about COVID-19, visit www.gov.bm/coronavirus.

Infection Prevention and Control Measures to reduce the spread of Covid-19

1. Conduct screening to limit the introduction of infection to the facility.

All staff/parents/caregivers should be aware of signs and symptoms of COVID-19, including:

- fever (equal or greater than 38 degrees Celsius)
- cough
- muscle aches and tiredness
- difficulty breathing
- sore throat, headache, diarrhoea, loss of smell and taste.

2. Temperature monitoring

- Parents/guardians should be instructed to check their child's temperature daily. Staff should be instructed to check their own temperature daily.
- Staff/children with any of the above signs and symptoms should stay home and not attend the facility for 14 days from symptom onset and no longer feeling unwell.
- In school temperature checks done when required utilizing **Touchless Thermometers** (e.g. forehead/temporal artery thermometers) should be used to reduce the spread of infection.

3. Sanitizing and handwashing

- Hand sanitizing stations should be established and maintained at all entrances and prominent places around the school.
- ALL persons entering the school should hand sanitize
- Adults and students 10 years and older must wear a face mask, as tolerated, when physical distancing cannot be maintained
- Masks are effective only when used in combination with frequent hand-cleaning with alcohol-based hand rub or soap and water.

4. Physical Distancing protocols

- Students and staff should continue to implement physical distancing recommendations (6-feet) as possible.
- Use of more conservative ratios to incorporate physical distancing guidelines by limiting group sizes to maximum of 10, using a ratio of 8 children to 2 adults or 9:1
- Consider a school shift schedule to reduce class sizes and maintain physical distancing.
- All pick-ups and drop offs should be conducted outside of the building
- Adults and students 10 years and older must wear a face mask, as tolerated, during this process

5. Enhance environmental cleaning and disinfecting schedules

- Practice proper hand hygiene and respiratory etiquette:
- Wash hands with soap and water for at least 20 seconds.
- If soap and water are not available use an alcohol-based hand sanitizer provided hands are not visibly soiled.

- Provide additional hand sanitizer stations (e.g., wall mounted hand sanitizer dispensers) in supervised areas.
- Cover your cough or sneeze into a tissue. Immediately throw the tissue in the garbage and wash your hands.
- If you do not have a tissue, sneeze, or cough into your sleeve.
- Avoid touching your face, nose, and mouth with unwashed hands.
- Administrators should monitor hand hygiene supplies to ensure adequate amounts of liquid soap, paper towel, hand sanitizer, tissues, and waste receptacles lined with plastic bags.

6. Enhance environmental cleaning and disinfecting schedules

- Intensified cleaning and sanitizing protocols including the provision of adequate supplies to facilitate cleaning and sanitizing
- High-touch surfaces and items in common areas (e.g. tables, chairs, toys, indoor/outdoor play equipment, doorknobs, light switches, handles, desks, toilets, sinks, electronic devices) must be cleaned and disinfected at least twice daily, when visibly dirty, and after contact with body fluids (e.g. saliva).
- Maintain strict trash management protocols, ensure use of covered waste receptacles and supply of gloves for handling.
- Ensure proper ventilation in the facility, open windows for increased air flow

7. Measures to reduce the risk of transmission during activities:

- Practice physical distancing as best as possible to maintain a two metre (six feet) distance between staff and children.
- Reinforce “no sharing” policies and procedures. This includes the current practice of not sharing food, water bottles or personal items and belongings.
- Suspend activities that permit the mixing of children from different schools.
- Stagger mealtimes and recess.
- Stagger use of playgrounds and play spaces to prevent over-crowding. Do not use community playgrounds.
- Supervise and ensure that children practice hand hygiene frequently while using dedicated playgrounds and after using playground equipment.
- Cancel field trips and other large gatherings
- Cancel or modify activities where students are likely to be in close contact.
- Stagger arrival and/or dismissal times
- Limit nonessential visitors
- Halt extracurricular group activities E.g. Karate, Gymnastics, Dance to reduce the exposure from privately contracted instructors who travel between facilities/schools
- Vulnerable students/staff MUST NOT return to school at this time. Every effort must be made to allow vulnerable students/employees to work from home.

References

- Centers for Disease Control and Prevention (2020). *Coronavirus Disease 2019 (COVID-19)*. Retrieved from <https://www.cdc.gov/coronavirus/2019-ncov/community/organizations/cleaning-disinfection.html>
- Centers for Disease Control and Prevention (2020). *Coronavirus Disease 2019 (COVID-19)*. Retrieved from <https://www.cdc.gov/coronavirus/2019-ncov/community/schools-childcare/guidance-for-schools.html>
- Government of Bermuda. *Corona Virus (Covid-19)*. Retrieved from <https://www.gov.bm/coronavirus-resources>